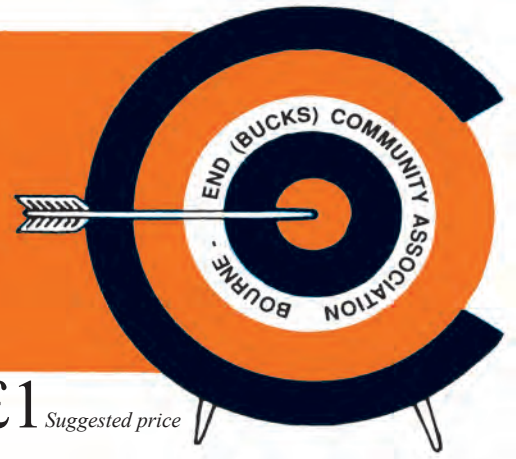


target



VOL. 62 No3
JUNE/JULY 2026

The association is a registered charity - number 300236

£1 Suggested price

The fight goes on to save our Green Belt areas

Plans for housing are 'not a considerable option' say our local independent councillors

In continuation from the article in the last edition of *Target*, we'd like to share in this magazine more detail on the potential areas which may be considered in the upcoming (draft) Bucks Local Plan writes Councillor Penny Drayton.

Turn to page 10 in this issue and you will see two maps. On these maps a large grey area can be seen which (if you can picture and identify the surrounding roads) sits on the hillside between Bourne End, Wooburn Town and Flackwell Heath.

This was the new area proposed when sites were shared earlier this year, which understandably, has caused much upset with residents.

Apart from some of this area being on

private land which the landowners have told the council outright 'is not available', there is no feasible access, and it is on high performing green belt which has been identified as such by the council themselves.

Your three local councillors (Penny Drayton, Larisa Townsend and Stuart Wilson) all sent individual, detailed, evidence-based responses to the consultation regarding this, explaining why it wasn't a considerable option.

The parish council also sent a very strong and detailed response to the same effect.

We will get no feedback to this until the draft plan comes out in July, but

we hope our local insight and knowledge will be considered. Nobody knows at this stage what is certain to be in the plan or not, but we do know from experience we need to be cautious, even when the suggestions are ridiculous.

In July the consultation will commence. This officially has to be no later than July 23, although it is scheduled to be officially publicised during the period July 29 to September 9.

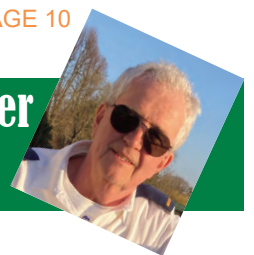
If publishing dates allow us, we are hoping to share the important information on this in the next edition of *Target* so keep a look out for that.

See the maps on PAGE 10

Janet's memories of a 1940s Bourne End p29



Say ahoy to our new river writer and read his first column p23



Chess man Doug wins at 86-years-old

Proving that age is just a number, 86-year-old Douglas Forbes played on top form to beat his challengers and win his section in the Bourne End Chess Congress meeting in March.

His son Colin, who was taught chess by Douglas as a child and who took this photo, came third. Douglas who has lived in Wooburn Manor Park since 1965, was taught how to play chess by his father when he was just seven years old. Over the years he has played for the Bourne End Chess Club, being a regular in the 1970s, and has been a member of the Gerrard's Cross Chess Club for more than 20 years.

His proud family contacted *Target* to let us know of his achievement. Son, Colin, also lives locally while his daughter Lisa lives in Little Chalfont. Douglas has four grandchildren, Poppy, Alex, Rebecca and Hannah, all in their 20s.

Douglas, who worked for 21 years at EMI Music as the Senior Purchasing Officer (retiring 30 years ago), has been a Watford FC supporter since 1955 and is a member of Gold Hill Baptist Church in Gerrard's

Cross. He attends their seniors' day gatherings every Wednesday... as a helper.

Douglas, who is the oldest ever division winner at the Bourne End Congress, last won in Bourne End in 1975. So, cheers to him on his 51-year comeback.

Bourne End Chess Club started in 1967,

and the tradition of running a chess congress in Bourne End Community Centre was established by the late George Parker around 1974, only pausing during Covid.

This Bourne End event is now one of the longest running chess tournaments in the UK, with entries this year from Berks, Bucks and Harrow totalling about 60 including 20 in Douglas's group.

Event co-organiser Andrew Smith explained: "The event is divided into three sections, with main prizes in each.

"The winner of the top Section A, John Sharp, was crowned Buckinghamshire Chess Champion for 2026, and awarded Custody of the 'Fred Day Cup' until next year's event.

"In Section B, the winner was young Ashley Melvin. Unusually, he doesn't play for any club, instead preferring to play chess online. This makes his victory with a 100% score of 5 wins from 5 games, rather surprising.

"The most interesting outcome of the whole event was the winner in Section C which was 86-year-old Douglas who is possibly the oldest person to ever win a chess tournament in the UK.

"The whole event was a great success. The chess played was competitive, but always in great spirit with an age range starting with a young girl aged 12 all the way up to Doug!"





Target magazine is published by Bourne End (Bucks) Community Association and distributed free to over 5,000 homes in the local area.

Bourne End (Bucks) Community Association

The Centre, Wakeman Road, Bourne End, Bucks SL8 5SX
 Telephone: 01628 522604
www.bourneendcommunitycentre.org.uk
 for current information or email office@bebca.org.uk
 Office Hours: Mon - Fri 9am to 4pm
 Centre Manager: Paula Riley

The association is a registered charity (No. 300236). It is financed by fundraising, donations and income from the community centre and is managed entirely by volunteers. Bourne End Community Centre offers the local community a wide range of clubs and activities that focus on history, crafts, sports and general interest. Social events take place on a regular basis and there is a well-stocked bar for members and visitors.

All the facilities can be hired. These include the large May Woollerton Hall with a stage and dressing rooms. Stage lighting, a sound system and a large screen are also on offer. Parties and meetings can hire the medium-sized Eghams Room, with a screen and a sound system also available for hirers. Two smaller rooms can also be hired depending on requirements.

Kitchens for light refreshments are available for all facilities. Why not call in and look around? Our Centre Manager will be happy to help.

Target Editor

Debra Aspinall
 Tel: 07881 558027
editor@targetmagazine.org.uk
Reporter: Hugh Howard
Hugh1.target@gmail.com

Target Advertising

advertising@targetmagazine.org.uk
 Our advertising rate card is on www.bourneendcommunitycentre.org.uk
 Click on Community Association, then Target.

Target Distribution

distribution@targetmagazine.org.uk

Printers

Gpex. Telephone: 01753 887450
 All material appearing in Target is the copyright of Bourne End (Bucks) Community Association. The Editor reserves the right to select letters and reports for publication and to edit for grammar, style and length.

USEFUL CONTACTS

POLICE 101
EMERGENCY 999
CRIMESTOPPERS 0800 555 111
www.thamesvalley.police.uk

MP: Joy Morrissey 0207 219 3000
 Email: joy.morrissey.mp@parliament.uk

POST OFFICES www.postoffice.co.uk
 (with last collection times)
 Bourne End, Furlong Road 5pm 01628 520050
 Flackwell Heath 4.45pm 01628 520524
 Wooburn Green 5pm 01628 522939

DOCTORS
Bourne End & Wooburn Green Medical Centre
 Hawthornden, Wharf Lane, Bourne End SL8 5RX
 The Orchard, Station Road, Bourne End SL8 5QE
 Pound House, 8 The Green, Wooburn Green HP10 0EE
www.bewgmc.co.uk 01628 530 997

HEALTH VISITORS' SERVICE 01628 482788

Cherrymead Surgery
 Queensmead Road, Loudwater HP10 9XA
MESSAGES, VISITS & APPOINTMENTS 01494 445150
www.cherrymeadsurgery.co.uk

NHS 111 or www.nhsdirect.nhs.uk

HOSPITALS
 Amersham Hospital, Whielden Street,
 Amersham, Bucks HP7 0JD 01494 434411
 Wycombe Hospital, Queen Alexandra Road,
 High Wycombe, Bucks HP11 2TT 01494 526161
 Stoke Mandeville Hospital
 Mandeville Road, Aylesbury, Bucks HP21 8AL
www.buckshealthcare.nhs.uk 01296 315000
 St Mark's Hospital, 112 St Mark's Road,
 Maidenhead SL6 6DU 01628 632012

Wexham Park Hospital, Wexham Street,
 Slough SL2 4HL
www.heatherwoodandwexham.nhs.uk 0300 614 5000

BOURNE END DENTAL PRACTICE
 Station Road, Bourne End SL8 5QF 01628 523353
www.bourneenddental.co.uk

Southern Electricity Emergencies 08000 727282
 Or 105 for power cuts

Thames Water Supply Emergencies 0800 714614
North Thames Gas Emergency (Slough) 0800 111999

DAY CENTRE, Wakeman Road, Bourne End SL8 5SX
 01628 527024

WYE VALLEY VOLUNTEERS,
 Portacabin, Wakeman Road Bourne End SL8 5SX
enquiries@wyevalleyvolunteers.org.uk
 01628 521027

BOURNE END LIBRARY
 Wakeman Road, Bourne End SL8 5SX 01296 382415
 Closed Sunday, Monday and Wednesday pm.
 Open late evening Tuesdays to 7pm
www.buckscc.gov.uk/bcc/libraries/
 Email: lib-boe@buckinghamshire.gov.uk

British Rail Passenger Information 08457 484950
 Bourne End Station, Station Road, Bourne End
 SL8 5QH www.nationalrail.co.uk
Carousel Buses www.carouselbuses.co.uk
 01494 450151

THE SAMARITANS
 (free number even from mobiles)
 or email jo@samaritans.org 116 123

ALCOHOLICS ANONYMOUS
 Calls answered 7am to 10pm 01628 530055
 Find meetings at www.aachilternthames.org.uk

BUCKINGHAMSHIRE COUNCIL,
 County Hall, Walton Street, Aylesbury HP20 1UA
www.buckscc.gov.uk 0300 131 6000
 Road/pavement/highways.
www.fixmystreet.buckscc.gov.uk
 Transport for Bucks: 01296 382416 (office hours)
 01296 486630 (out of hours emergencies)
 Housing emergencies: 0800 999 7677
 Social care: 01296 387021 (to report abuse)
 0800 999 767 (out of hours emergencies)

WOOBURN & BOURNE END PARISH COUNCIL
 Council Offices, Town Lane,
 Wooburn Green HP10 0PS
www.wooburnparish.gov.uk 01628 522827

LITTLE MARLOW PARISH COUNCIL
 Community Office, The Pavilion, Church Road, Little
 Marlow SL7 3RS
www.littlemarlowparishcouncil.org.uk 01628 890301

SCHOOLS
 Claytons County Combined, Wendover Road,
 Bourne End SL8 5NS
www.claytonspg.org.uk 01628 525277
 Little Marlow School, School Lane,
 Little Marlow SL7 3SA
www.littlemarlow.bucks.sch.uk 01628 473316
 St Paul's School, Stratford Drive,
 Wooburn Green HP10 0QH
www.st-pauls.bucks.sch.uk 01628 521553
 Wooburn Green Primary School, School Road,
 Wooburn Green HP10 0HF
www.wooburngreenprimary.co.uk 01628 521634
 Bourne End Academy, New Road,
 Bourne End SL8 5BW
www.bea.bucks.sch.uk 01628 819022

COMMUNITY CENTRE NEWS

See our cinema listings here and turn the page for more activities and events at your community centre

Sunday 28th June 16:00

Doors open 15:20 for refreshments

Tickets £6 Members - £7 Non members

online at TheNewRoyalty.org.uk or

from the Centre office 01628 522604



An eccentric lottery winner lives alone on a remote island and dreams of reuniting his favourite musicians, once a popular folk duo and former lovers. He hires them to perform a concert at this home and unresolved feelings resurface.

Starring Tom Basden, Tim Key and Sian Clifford

12A At Bourne End Community Centre

The New Royalty Cinema is a fundraising event for Bourne End Community Association Charity No. 300236

Wakeman Road, Bourne End, Bucks SL8 5SX

Sunday 19th July 16:00

Doors open 15:20 for refreshments

Tickets £6 Members - £7 Non members

online at TheNewRoyalty.org.uk or

from the Centre Office 01628 522604



An award-winning film-maker documents her best friend's journey into an assisted marriage in line with his family's Pakistani heritage. In the process, she challenges her own attitude towards relationships.

Starring Mim Shaikh, Iman Boujelouah and Lily James

12A At Bourne End Community Centre

The New Royalty Cinema is a fundraising event for Bourne End Community Association Charity No. 300236

Wakeman Road, Bourne End, Bucks SL8 5SX

Martin Adams

VEHICLE SERVICING REPAIRS & MOTs

Tel: 01628 850000 www.mavs.co.uk



- General car repairs and maintenance
- Free courtesy car available
- Tyres, exhausts and batteries supplied and fitted
- Latest diagnostic equipment for all makes of vehicle
- Air conditioning service available
- 35 Years Experience




01628 850000

email: info@mavs.co.uk

Alexander House, Wessex Industrial Estate, Bourne End



Support local shops and businesses

 Bourne End Community Centre

Coffee Morning

Join us for tea, coffee and
cake in aid of

CURE
Leukaemia

In connection with the ATICUS Network
(Accelerating Trials in Children Undergoing Stem Cell Transplant)



Saturday 27th June

11 am - 1pm - All welcome

Free Entrance, with a donation to Cure Leukaemia

Wakeman Road, Bourne End, SL8 5SX

Bourne End (Bucks) Community Association Charity No. 300236

 Bourne End Community Centre

Saturday 6th June



Doors 19:30 - Showtime 20:00

Tickets Members £10.00/Non-members £12.00

Online at bourneendcommunitycentre.org.uk,
or from the Centre office. Tel: 01628 522604.

Bourne End Community Centre, Wakeman Road, SL8 5SX

This event is a fund raising activity of Bourne End (Bucks) Community Association Charity No.300236

Centre Bar Quiz

The next quiz dates are June 4 and July 2. These will be held in the May Woollerton Hall (unless otherwise advised on the evening). Doors open at 7.30; please arrive by 7.45 for an 8pm start. For information call Diane on 07521 656413 or email secretary@bebca.org.uk

SMALL CHANGE APPEAL



Thank you to those who have already donated their spare coins to our Small Change Appeal. Coin donation so far is £243.11. We have had a number of foreign coins donated and we welcome these!

So everyone, please check in your desk drawers, old purses and down the back of the sofa to dig out all your left-over banknotes and coins from old trips and consider donating them. Just hand them in at the community centre in Wakeman Road.

Both these and unwanted small change will support your community centre. THANK YOU.

 Bourne End Community Centre

 Bourne End Community Centre



OPEN MIC
MATT BOND'S OPEN MIC NIGHTS
The second Thursday of every month
Free Entry
8pm - 10.30pm
11th June, 9th July, 13th August
Bourne End Community Centre Bar
Wakeman Road SL8 5SX

Bourne End Community Centre
Charity Number 300236



TEA DANCE



Bourne End Community Centre
Wakeman Road, SL8 5SX
Sunday 7th June 2026
2.00 - 4.15 pm

Dance to inspiring music, meet your friends and make new ones.

Ballroom and Latin Dances
well known Sequence Dances

Both couples and dancers on their own
are welcome

Refreshments served in the break
Tea, coffee, biscuits and cake




Members: £7.00 Non Members: £8.00 Pay on the door.

Bourne End Community Association

LINE DANCING NIGHT

★ ★ Join the Fun! ★ ★

Looking for a great night out?
Come along to a fun-filled Line Dancing Evening at
Bourne End Community Centre

What's Included:

- Tasty BBQ
- Learn a few **easy line dances** (no experience needed!)
- ★ Great music 🎵
- ★ Friendly atmosphere
- ★ Plenty of laughs!




Whether you're a **complete beginner** ~ just fancy a fun night with friends — **everyone is welcome!**

Bring your friends, your **dancing shoes** 👢 and your **appetite** — we can't wait to see you there!

★ ★ ★ EVENT DETAILS ★ ★ ★

Bourne End Community Centre
Wakeman Road, SL8 5SX

📅 **Thursday 18th June** ⌚ **From 7:30pm**

🎫 **Tickets: £10 Members £12 Non-Members**

Available online at bourneendcommunitycentre.org.uk
At the centre office — 01628 522604
Or on the door (subject to availability — booking recommended!)

★ **No partner needed — just bring your smile!** 😊 ★

This is a fund raising activity of Bourne End Community Centre

Cabaret talent on show in Bourne End

The community centre hosted its first cabaret in March, with a stunning array of mostly local talent.

Held together expertly by our very own Dave Kimber as MC, the evening started with John and Rosie's take on acoustic folk and pop, with beautiful harmonies and virtuoso guitar playing. This was followed by impressionist and comedian Steve Owen, who delighted the audience with his accurate impressions of popular and not-so-popular well-known figures.

After a brief interval we were entertained by different groups of dancers, mainly belly dancers such as Mysterious Phoenix and Sandy Maya, finishing with an amusing skit by the Belly Cleaners.



The evening was rounded off by Victoria Elizabeth, who belted out a few popular songs, getting us all joining in and sending us off on a high.



Everyone enjoyed the evening and would love to see another cabaret evening here soon. Once the organisers have had the time to recover from this first one, they may be persuaded to put together another evening of music, dance and laughter — you never know!

Bourne End Community Centre

COMMUNITY DAY



Sunday 12th July
12.00 - 3.00pm
Free Entrance - All Welcome

BBQ - Ice cream - Cakes
Short mat bowls - Darts - Crafts
Singing - Salsa - Belly dancing
And much more!

Wakeman Road, Bourne End. SL8 5SX
Bourne End (Bucks) Community Association. Charity No. 300236

More community centre news next page

ANGLING CLUB

Tales from the water's edge

Spring already. I can hardly believe it, but it is truly wonderful to have light evenings once more, they feel like they have been a long time coming.

We fished Royal Berkshire in April. Although a cold day it wasn't too bad in the swims that had sunshine. First was John Taylor with 22lb 08oz, second was Neil Townsend with 15lb 10oz and third was Eric Leuzinger with 13lb 12oz.

In May we returned to Royal Berkshire Fishery. It fished really well, obviously a change in temperature helps. First was Neil Townsend with 86lb 08oz, joint second was Anthony Coleborn and Henry Rimmer with 48lb and third was Chelsea Smith with 37lb 08oz. Thanks to all who managed the match in my absence and well done everyone for much better weights from Royal Berkshire this time.

We have one more match, which is not part of the nine match shield, which is the 'float only' then our season is complete and I will be able to announce the winners next time. So watch this space.

We are always looking for new members and you don't have to match fish. By joining us you have access to some free waters as we are affiliated to the Thames Valley Angling Association.

If you fancy guesting to meet us all (we are a really friendly club) with a view to joining please get in touch .

Until next time tight lines.

Michele Smith
Secretary BE Anglers
Phone: 07802 711141

Email: Raemichelesmith@yahoo.co.uk

 Bourne End (Bucks) Community Association

Bourne End REPAIR CAFE




**Bourne End Community Centre,
Wakeman Road, SL8 5SX**

Dates for 2026, all 11.00-1.00
18th April, 16th May, 20th June, 18th July,
15th August, 19th September,
17th October & 21st November

Flackwell Heath Repair Café in Flackwell Heath Community Centre, first Saturday of every month, 10.00-12.00

**No charge for repairs, but donations are welcome.
Tea and coffee available.**



**Are you a Beatles fan?
Then reserve
October 24 for a
very special
evening that you'll
love. More details
in the next issue**

Annual General Meeting

The Annual General Meeting of the Community Association will be held on Wednesday June 3 at 7.30pm in the Eghams Room at the community centre. All members are welcome to attend. Light refreshments will be provided.

The agenda is available, together with meeting papers, at the centre and on the association's website bourneendcommunitycentre.org.uk

EXCITING NEWS FOR OUR CLIENTS, PARTNERS & COMMUNITY

Naylor Accountancy Services Expands

STRENGTHENING THE FUTURE OF BUSINESS SUPPORT LOCALLY

Naylor Accountancy Services is pleased to announce the acquisition of **Another Answer of Bourne End**, marking another step in our continued growth and our long-term vision to support local businesses.



STRONGER TOGETHER. MORE CAPABILITY. GREATER SUPPORT. BETTER OUTCOMES.

Book a free consultation with one of our award winning team
accounts@nayloraccountancy.com • www.nayloraccountancy.com • 01628 530805




Services Available:

- Toenails & fingernails cut and filed
- Reduction of thickened nails
- Corn and callous (hard skin)
- Cracked Heels
- Ingrowing toenails / Verruca
- Fungal Nails
- Diabetic Footcare and Advice

Nina Williams
Dip FHP, MCFHP MAFHP
Mobile Foot Health Practitioner
07807 136 541 - nina@ninafootcare.com - ninafootcare.com

Covering: Marlow, Marlow Bottom, Flackwell Heath and Bourne End



 **Live Music**
 **Registered Charity no 288430.**
 **Free entry**

Wooburn Summer Fete

Saturday 20th June 2026
12 noon - 5pm
 To be held on Wooburn Green HP10

 **Funfair, facepainting and crafts for children**
 **BBQ and other food available to buy**

With grateful thanks to our sponsors




WOOBURN RESIDENTS ASSOCIATION

By Caroline Meechan

We hope you all have June 20 in your diary and are ready to come along and enjoy the annual Wooburn Fête organised by us and held on The Green from midday to 5pm.

This is a wonderful summer event and we are very grateful for the financial support from Wooburn and Bourne End Parish Council as well as our generous sponsors; G Smith Funeral Directors, Crendon House and the Rotary Club of Bourne End and Cookham.

All monies raised from the fête support our Christmas event which offers children an opportunity to see Santa and enjoy activities for no charge.

The day takes a lot of planning

and organising behind the scenes so please come along and support it.

The Scouts will be hosting their delicious barbecue as well as fun family games and there will be small fairground rides (for younger children), shopping opportunities from local businesses as well as our local churches, community groups and charities all alongside entertainment, face painting, music and fun.

As well as hosting events, we facilitate free-of-charge talks and were delighted to welcome Bucks Fire and Rescue Service in April. It was very interesting to hear about how to prevent fire, steps we can take to protect ourselves and meet the brave men and women who work in this vital service.

Our next talk will be from the RNLI – our lifeboat service – which is completely staffed and funded by volunteers and donations.

Considering that we live on an island this is something to ponder. This talk has no date set at the moment – please follow us on Facebook or check the website for dates of all events and activities.

To remind you, we meet every other month in the private room at the back of the Wooburn Club.

Meetings are an excellent forum to meet your neighbours, have a drink (subsidised bar) and discuss matters pertaining to our beautiful area.

We always have members of our independent councillors present as well as representation from the parish council. We can promise you that things do get done.

We look forward to seeing you. **Our next meeting is July 13, 8pm.**



OFFERING FRESHLY PREPARED PUB FAVOURITES & SUNDAY ROASTS
BI - MONTHLY SMALL PLATES THURSDAY – SATURDAY (6PM-9PM)
 4TH - 6TH JUN
 18TH - 20TH JUN
 2ND - 4TH JUL
 16TH - 18TH JUL
 30TH JUL – 1ST AUG
DINE ALFRESCO
LIGHT BITES @ LUNCH TIMES
CALL & COLLECT AVAILABLE
 TUES – THU: 12NOON - 3PM, 5PM - 10PM
 FRI & SAT: 12NOON - 10PM
 SUN: 12NOON - 6PM
 MONDAYS - CLOSED
01628 532417
 WALNUTTREEBOURNEEND.CO.UK



We'll open it now!
SECURE HOMES 30 MINUTE RESPONSE
UPVC LOCK SPECIALISTS
All Domestic & Commercial Lock Problems Solved by your Trusted & Reliable Family Business
 • POLICE RECOMMENDED AND INSURANCE APPROVED LOCKS SUPPLIED & FITTED
 • ALL TYPES OF DOOR & WINDOW LOCKS FITTED, OPENED, REPLACED & REPAIRED

01628 528433
 Or if line busy: MOBILE
 07799 640096
 www.allsecurehomes.co.uk
 10 Thames Close, Bourne End Bucks SL8 5QJ
FREE Advice, Surveys & Estimates

Chubb Locks **Yale** **GEORGE UNION**
EST. OVER 33 YEARS
TRUST IN EXPERIENCE
24 HOUR SERVICE
97 DAYS A WEEK
365 DAYS A YEAR

We will give you a competitive **FULL QUOTE** before we start any locksmith work

•UPVC
 •CHUBB
 •YALE
 •UNION
 •ERA
 •LEGE
 •ASEC
 •VIRO
 •ABLOY
 •CISA
 •ASSA

TALK TO A LOCAL LOCKSMITH ... not a Call Centre!

BRIDGE PLAYER'S BIDDING QUIZ

Bourne End Bridge Club has compiled some of the best quiz questions which have appeared in *English Bridge*. Try this one set by **Julian Pottage**. You are sitting West. What should you bid on the given auction. Assume love all.

♠ A 8 5 W N E S
 ♥ K 9 7 3 1♦ 2NT¹ 3♦
 ♦ 10 9 4 2 ?
 ♣ Q 4 ¹Lowest two suits, 5+5

Julian Pottage gives his answer on page 24

English Bridge is published by the English Bridge Union.





Wooburn and Bourne End Parish Council

Working with the Community

By Jess Lewis

Entrants to the Bucks Best Kept Village competition will be judged during June and July with the principal parish features being judged to include the cemetery, childrens' play areas, nature conservation areas, wild flower and floral displays as well as general environmental features.

Last year's entry was such a success, we hope that this year we will all have done the best we can to win.

Coming in to the warmer weather, we know a lot of you will be venturing out more into our parks and open spaces.

As a nation of animal-lovers, we appreciate you taking your dogs out into the parks for exercise and enrichment, but we ask you please to also respect the natural wildlife that lives in these areas.

There have been incidents where duck nests have been disturbed and swans aggravated by unrestricted dogs by the river – please adhere to the polite signage and keep our wildlife safe.

As some may already know, our parish clerk has announced his retirement and will be leaving us in mid-July.

Mike Balbini has been a vibrant part of the council for over 10 years - first as a councillor, followed by four years as clerk - and in his time here he has not only contributed hugely to the improvement of our parish, but the existing relationships he has nurtured and new positive links formed with local residents and groups we hope will continue to serve us long after his departure.

Many things around the parish (including, but not limited to, the King's Commemorative Stone on The Green; Christmas lights that twinkle throughout Wooburn and Bourne End; the ongoing success of Parkfest) will serve as a reminder of the hard work and passion Mike has put in as clerk.

We will miss having him and his sense of humour at the helm, but we hope he enjoys his retirement (and keeps in touch).

We will continue to attend Bourne End's community market every second Saturday of the month, so please do come and speak to us.

The parish council meeting schedule for the upcoming year is available to view on our website and Facebook pages. We would love to welcome many more members of the public through our doors this year, so please do feel free to come along to any meetings that may be of interest to you.

Parkfest organisation is well under way - Saturday August 29 will soon come around so make sure you add this to your diary. Following on from last year's success we are aiming to make this year's event bigger and better, welcoming back some familiar



faces throughout the event plus the addition of new activities and stalls.

If you are interested in attending as a stallholder, please contact the office on office@wooburnparish.gov.uk

Please continue to report any issues you see within the parish to us as we can only help if we are made aware.

Email clerk@wooburnparish.gov.uk

contact us via our website

wooburnparish.gov.uk

call on 01628 522827, or drop into the office inside Wooburn Cemetery. We are happy to help.

BOURNE END JUNIOR CRAFT SHOW

The 14th Bourne End Junior Craft Show will take place at Bourne End Library on Saturday October 3.

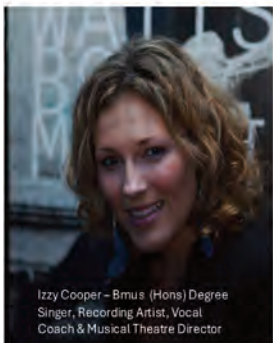
Open to children and young people aged four to 16 from Bourne End, the Wooburns, Flackwell and the surrounding area, the show is completely free of charge to enter, and you can enter as many different items as you like. We have some lovely arty crafty prizes up for grabs, as well as rosettes and even trophies for some lucky winners.

This year we have a new class — Everything Elephant. For this you can enter any piece of artwork as long as its main component is one or more elephants. It could be a picture, a model, a collage, a soft toy, or anything else your imagination conjures up.

Aside from this the usual range of classes is still on offer including painting, photography, needlework, clay models, decorated cupcakes, and many more.

See our website

www.bejuniorcraftshow.co.uk



Izzy Cooper – Bmus (Hons) Degree
Singer, Recording Artist, Vocal
Coach & Musical Theatre Director



Neil Wilson – Actor
Lamda Speech & Drama

Singing & learning to sing, connects the mind with the heart & the heart with the soul

SUMMER SING CAMP

(Bourne End, Wooburn Green & Flackwell Heath & Surrounding Areas)



2026



We are very excited to share our popular Summer Sing Camp Holiday Adventure featuring 'High School Musical' being held this year at St Pauls C of E Combined School. Ages 7 – 13 Yrs

Starting Monday 27th to Friday 31st July between 930am - 330pm. We will finish with a wonderful stage performance touching on Basketball & Cheer Leading Routines to the best & worse/funniest auditions, singing all the musical favorites and featuring our craft creations for all to enjoy on Friday afternoon!

If this is something that your children will enjoy, you are warmly welcome and we are happy for you to bring along friends and/or family.

Our number one priority is to help all young musical enthusiasts to develop their technique, work as a team, build friendships and above all, have fun, grow in confidence and improve all these skills for life.

Let's support and encourage our next generation who may very well take to the stage in the future! ☺

Book or call us now as places are limited!

Early Bird Offer to May 31st £195 / Siblings £190 (Includes Booking Fee)

izzy@izzysings.com / 0750 398 4320

www.izzysings.com



Summer Sing Camp 2026 - 27th July – 31st July

HIGH SCHOOL MUSICAL

St Paul's C of E School & Nursery
Wooburn Green
9.30 – 3.30pm

Book now for Early bird offer! Ages 7yrs-13yrs

Games, Crafts, Acting, Show!, Dancing, Singing

Email / Call us now for booking form as places limited – Fully Insured, GDPR & DBS checked.
Izzy 0750 398 4320 / izzy@izzysings.com
Neil 0777 524 2077 / neil@lmda.com

£205 per child for the week, £190 siblings
£55 per day (Mon-Wed only)
Early bird offer to May 31st £195 per child



Dunne & Waterman
CHARTERED ACCOUNTANTS

**TAX RETURNS &
TAX ADVICE**

Based in Bourne End with an office in the City. We can prepare and submit your personal tax returns, or get you up to date with your tax quickly and efficiently, and let you know if you are paying too much tax.

We also give you tax advice; for example, if you are renting or selling a property, either in the UK or elsewhere. With careful planning you can save tax if we are involved before the transaction.

We are happy to let you have a fee quotation.

markwaterman@mdmw.london
mariedunne@mdmw.london
www.dunneandwaterman
Tel: 07598 494879 or
0203 393 2750



**Is alcohol costing you more
than the price of a drink?**

Then help is at hand.

Alcoholics Anonymous has nearly 60 meetings a week in the Chiltern Thames area.

To speak to us, please call
01628 530055

Lines open 7am -10pm
or to find a local AA meeting, visit
www.aachilternthames.org.uk



From the ground up
a helping hand in the garden

Planting to maintenance, we care for everything in your garden.
01628 303130



Aztec heating and plumbing

**Repairs to all Gas
Boilers & Servicing
Contracts**

**Also General
Plumbing Repairs**

**Central Heating,
Pumps, Valves, Timers
& Programmers**

Tel: (01494) 440219 home

Tel: 07973 439781 mobile

Tel: 07831 563477 mobile

SAMSON WINDOWS & DOORS

*Designed to look good
for a very long time*



www.samsonwindows.co.uk

Tel: 01628 524469

We have been in continuous trading within the local community for over 25 years. We supply and install a range of market leading windows and doors manufactured to exacting standards of quality and performance and installed to the highest levels of finish and workmanship. More than 76% of our work is secured by referral and recommendation.

We do not believe in the hard sell, nor do we offer discounts for quick decisions. Our quotation is offered without obligation and discussed without insulting your intelligence. You will find it extremely competitive.



- o A Rated PVCu windows and doors
- o Timber alternative woodgrain windows
- o Authentic style sliding sash windows
- o Composite entrance doors



AS GOOD AS NEW

Mobile Bodywork Repairs

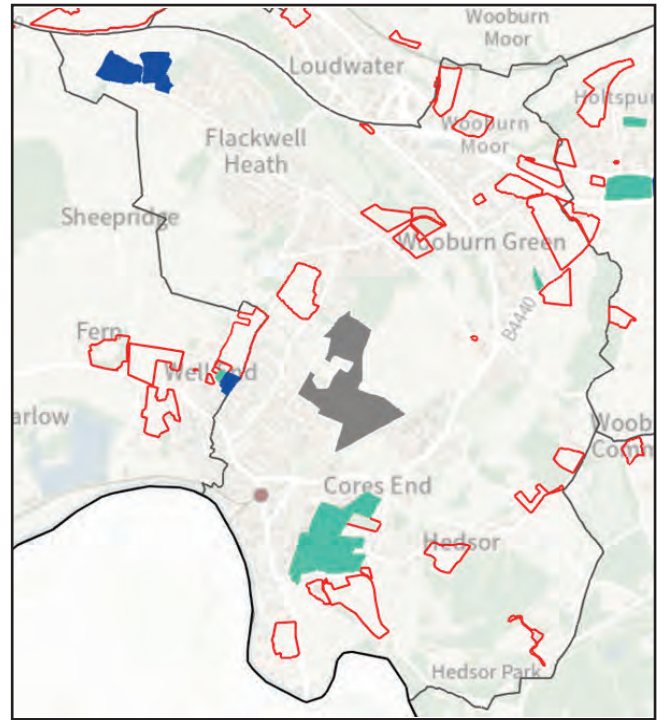


DAMAGED YOUR CAR?
Scuffs, Scratches & Dents

Call Malcolm now for a free quotation!

Office: **01628 532586** Mobile: **07786 482262**

The map on the right shows the whole ward with all sites displayed. The map below shows the large grey proposed area with nearby roads marked for easy identification of the area.



As always we continue to attend every Bourne End Community Market (second Saturday of each month) and every Flackwell Heath Market (third Saturday of each month) so please pop along and see us there if you have any matters to discuss, or drop us an email at any time on

Penny.Drayton@Buckinghamshire.gov.uk
Larisa.Townsend@Buckinghamshire.gov.uk
Stuart.Wilson@Buckinghamshire.gov.uk



THE GARIBALDI
"Friendly and welcoming"

Open Every Day
 Food served every day
 Traditional pub classics and Sunday lunches
 Daily Specials
 Dogs welcome
 Follow us on Facebook
Your proper local pub!

The Garibaldi pub, Hedsor Road, Bourne End SL8 5EE
 01628 522 092 www.garibaldi.pub

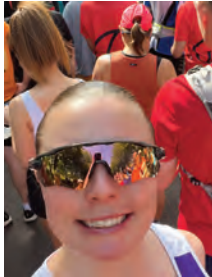


Nurse Lucy completes her marathon challenge

District Nurse Lucy Hopla completed her London Marathon challenge in April, raising more than £2,000 for charity, and says she wants to do it again.

She told *Target*: "I really enjoyed the whole fundraising process and in total our group of seven runners for Bucks Healthcare raised £13,300 for their charitable trust, which is amazing. So thank you so much to everyone who donated.

"The London Marathon was the hardest thing I have ever done and at times I didn't think I was going to finish it, but the



support from friends, family, colleagues, local people in Bourne End and the Wooburns, patients and the crowds was absolutely amazing.

"Running for such a good cause pushed me to the finish line. It was the best day ever and I had so much fun although I really struggled.

"Unfortunately, I didn't do it under six hours, my time was 6 hours 40 mins, but I had a wonderful day and I want to do it again.

"It was such an amazing experience, everyone was so supportive and friendly and the atmosphere in London was incredible."





Home Counties — ROOFERS LTD —

We are a local family run business that you can depend on with over 45 years of experience.

10 year guarantee on all new work. Insurance backed guarantees available.

Get in touch for a free quote.

SERVICES

- * New roofs
- * Flat roofs
- * Rubber roofing
- * Slating & tiling
- * Lead work & chimneys
- * Fascias & soffits
- * Roof repairs & much more

team@homecountiesroofers.co.uk | 01628 819323 | 07917128142









CROWDEN



• COACHWORKS LTD •



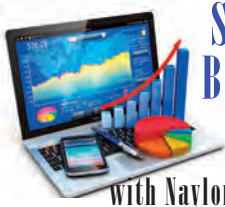
- Car Body Repairs •
- Garage Services •
- Accident Repair Services •
- Insurance Repairs •
- Paint Spraying & Much More •

We repair all makes and models and also deal with all insurance companies

5A The Green, Wooburn Green, High Wycombe, Bucks HP10 0EE

Tel 01628 526463

www.crowdencoachworks.co.uk



SMALL BUSINESS MATTERS

with Naylor Accountancy Services

A new chapter for Another Answer

If you've known Another Answer over the years, you may already have heard that things are changing.

Another Answer is now part of Naylor Accountancy Services and our Bourne End office will be known as Naylor Accountancy Services (Bourne End).

This change brings together the best of both, the local relationships and services you value, alongside the broader expertise and support of Naylor Accountancy Services.

We truly feel this is a natural evolution, allowing us to continue supporting local businesses in the same way, while also expanding what we can offer.

This is driven by our common belief that for many small business owners, accountancy is not just about the numbers. It is about knowing that there is someone sensible just a phone call or email away, who understands your business, helps keep things on track and takes some of the pressure off.

Yes, deadlines and compliance matter, but so does having someone who helps you feel more organised, more informed and more confident about what is going on in your business. This kind of support matters.

We're incredibly proud of the trust that has been built in Bourne End over the years under the leadership of Sylvia and Neil Bourhill. The relationships we enjoy within the local business community are something we value deeply and are committed to continuing.

As Sylvia and Neil now step back to enjoy a well-earned retirement (and a bit more travelling), we're pleased to share that the wider Bourne End team remains in place.

We believe that this change delivers continuity but also means more support behind the scenes. That includes access to a wider team, broader experience across tax and advisory work, and stronger systems and technology to support clients well over time.

Our intention is not to make things feel more complicated. Quite the opposite. We know small businesses often value dealing with people who understand the pace and reality of local business life, not just people who produce figures each year.

This is also why we are pleased to continue writing the Small Business Matters column for *Target* magazine. This is a perfect forum for us to continue sharing useful, relevant information from one local business to others in our existing community.

And so while we are here, it is worth a quick reminder about Making Tax Digital.

From April 6, 2026, sole traders and landlords with qualifying income over £50,000 need to submit quarterly updates under Making Tax Digital for Income Tax. If this applies to you, you will almost certainly have received letters or emails from HMRC. Please do act on them.

Of course, if you are not in this bracket, MTD does not affect you right now, but it is coming. Please be aware that the scope of MTD widens to include those earning over £30,000 from April 6, 2027, and over £20,000 from April 6, 2028.

Whether you are self-employed or receive income from property, now is a good time to check where you stand and make sure your records and software are ready.

If you would like some help with your first steps towards MTD, or need advice, give us a call.

So, we are evolving, but also staying the same, and we look forward to working with you, our local community, in the future because we believe that small businesses matter.

Alisa Schroeder

Naylor Accountancy Services – Bourne End
www.nayloraccountancy.com



Target's new reporter

Target welcomes its new roving reporter, Hugh Howard.

Hugh has been given the brief to report on local events, people, clubs and activities.

"I am very excited about finding out more of what goes on and promoting our wonderful villages," said Hugh.

Hugh moved to Well End 10 years ago from north Staffordshire. He is a retired solicitor who had a busy criminal and child care practice.

He investigated the 'Pin Down' child abuse scandal of the 1990s. He defended a scrap metal merchant who stole the Falklands Islands airstrip, and also the regional head of security of the Post Office whose theft of used bank notes was the largest PO loss since the Great Train Robbery.

He was also solicitor to Walsall FC and chair of a charitable housing association. In a voluntary capacity he trained to ambulance technician level. For 11 years he was a First Responder for Staffordshire ambulance service. He served as a part time judge for 16 years and a full time judge for 20 years dealing with welfare benefits and armed forces compensation.

His interests include keeping active with his six grandchildren, theatre and opera, and exploring the UK with his wife in their camper van.

Contact Hugh on Hugh1.target@gmail.com



At Bourne End Motor Company, Nick and Tim have been providing top-quality, low-mileage vehicles to customers for over 30 years. We pride ourselves on offering only the best - cars that have been lovingly maintained, often with just one previous owner, and a full service history to back it up.

Whether you're after your first car or an upgrade, you can rely on us to provide cars that offer both value and peace of mind.

If the manufacturers warranty has expired, we've got you covered with an Insurance based 6 Month Comprehensive Warranty with Autotrust. (Extended Warranties are Available)

Visit us today to find your perfect car.
Your trusted local dealer for 30 years and counting!

- Discover Quality, Trust, and Experience at Bourne End Motor Company
- Low Mileage Cars - Under 50,000 Miles
- All our cars have been privately owned
- Full Service History
- 30+ Years of Trusted Service
- Computerised Stock Locator System

TEL: 01628 533 222
SALES@BEMC.CO.UK
WWW.BEMC.CO.UK

WAKEMAN ROAD • BOURNE END • BUCKINGHAMSHIRE • SL8 5SX






TAKE YOUR TARGET

Wendy Mulhall took her *Target* on the holiday of a lifetime to Australia. It certainly didn't disappoint especially seeing Sydney and enjoying the attractions of that city.

"Highlights, of course, were the Sydney Opera House (of which I had a guided tour before attending an operatic concert) and the harbour bridge, which I had actually climbed the day before.

"My photos show my bridge climb, including one which features the opera house," Wendy enthused.

She then flew down to Melbourne where her brother whisked her off to the family



home on the beautiful Mornington Peninsula.

Together with the family, Wendy then enjoyed a six day road trip driving around 600 miles along the Great Ocean Road to Adelaide. "It really was the holiday of a lifetime and unforgettable," Wendy grinned, "a wonderful start to a future as a retired lady. I can recommend it."



TAKE YOUR TARGET

Clark Schofield sent in this picture of himself for our Take Your *Target* feature.

He wrote: "On a recent trip to India with work, I had the chance to visit India Gate, the magnificent war memorial in central Delhi.

"I was lucky enough to meet up with some local friends and of course, they were a little puzzled, but highly amused, as to why I had my copy of the world famous *Target* magazine!

Clark, who lives on Chalklands, usually works in Little Chalfont and says trips like this are an occasional event.

Highlights for him were the tuktuk rides round town, "always exciting", and enjoying some amazing food at the famous Kwaliti restaurant which has been serving the locals since the 1940s.

K Kingshills
ESTATE AGENTS

Partner Agents
David Pering & Susan Allen

Marlow | Maidenhead
Bourne End | Wooburn Green

Property Valuations
Including Probate

01628 561222
www.kingshills.co.uk



BOURNE END LIBRARY

With the school summer holidays fast approaching, it's time to get children motivated to participate in the Summer Reading Challenge: Read to the Beat which starts in early July. The collection features 55 captivating titles for different reading levels, spanning early readers, and middle grade titles, as well as dyslexia-friendly titles. The website readingagency.org.uk has full details.

And speaking of challenges, here's one for our adult readers: 'Read 6 in 26'.

Over the course of the year, read a book from six selected categories, for example: Be a Time Traveller (read a book set in the past or future) or Book to Screen (read a book adapted for the screen). Suggested titles for each goal are available on the Bucks Libraries' website, but participants are not limited to choosing from this list.

This is a self-paced challenge where you mark your own progress by logging into your library account and selecting which goals you have completed. Sign up with your library card on the library catalogue. The challenge closes on November 30 and participants completing it will be entered into a prize draw.

Older members of the community may be

interested in the 'Reminiscence' sessions held on the last Saturday of the month from 10am to midday. These free sessions give attendees a chance to chat and share memories over a hot drink and a biscuit.

Generally there is a themed starting point before going to wherever the chat takes them. Memories can be prompted through the senses, for example, music or videos. Recently, explorations of genealogy and ancestry have been added.

Another free Saturday event, this time aimed at six to 12 year olds, is 'Coding' held on alternate weeks (second and fourth) from midday to 1pm. Participants will learn basic coding using the BBC micro:bit minicomputer.

In the pipeline is the formation of a free Spanish conversation group to be held on the second Saturday of the month. This is recommended for those who have basic conversational Spanish.

If you enjoy reading, but find it difficult to get to the library in person, there are two schemes to help you. The Home Library Service is a free monthly service where books and other library items are delivered to your home by volunteers. Apply by calling the service on 01494 475573 Monday to Friday 9am to 5pm or leave a message outside these hours and you will get a callback. Or you can email homelibraryservice@buckinghamshire.gov.uk

The Library Buddy Service lets a friend or family member visit the library and borrow and return library books for you. With a Library Buddy card you get a 31 day loan period and no overdue or reservation charges.

Ask your friend or family member to visit the library where staff will help them join this service for you.

Remember that Bourne End library offers three meeting rooms. These are flexible and dynamic spaces at affordable rates.

Out-of-hours room bookings are available from 8am until 10pm. Please note that you must make arrangements to collect a key and instructions for out-of-hours bookings.

For more information and to make a booking go to bourne-end.lemonbooking.com

Friends of Bourne End Library

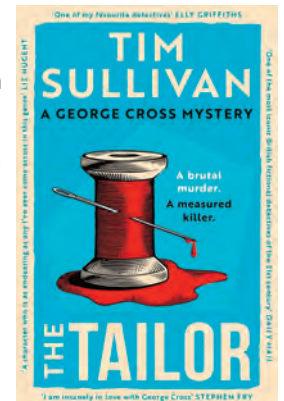
The talk from Dr Amanda Brown about her life as a Prison Doctor was excellent and very well attended. Everyone enjoyed a glass of fizz and nibbles before settling to a very clear and well delivered talk from our speaker. This was followed by a number of questions and answers, among them from a concerned listener wanting to know how she managed to take care of herself both mentally and physically. Her main concern was for the care and support of those in need within the prison system.

On Wednesday June 11 we will have our official opening of the stained glass window for the Children's Library. There will be an afternoon tea from 2.30pm to 4pm costing £6 per person.

Friday July 10 at 7pm for 7.30pm we will have an 'Interview with Tim Sullivan', producer, screenwriter and author of the George Cross Crime Mysteries.

Local film and book critic, Quentin Falk, will be the interviewer. Tickets, £10 are available from the library, cash only.

Books will be on sale during the evening, with a member of The Little Bookshop, Cookham organising this. Pre-publication copies of The Tailor, his latest George Cross mystery will be available.





PHYSIOTHERAPY AND SPORTS INJURY CLINIC

**HIP AND KNEE PAIN,
ANKLE, FOOT PAIN,
BACK AND NECK ACHE,
SHOULDER PAIN,
TENNIS & GOLFER'S ELBOW**



Laura has been a physio since 1994 specialising in musculoskeletal sport's injuries, rehabilitation, pre and post of rehab. She also works with the elderly to help prevent falls, improve general strength and mobility.

WWW.CLEARPHYSIO.CO.UK
19 West Ridge, Bourne End, Bucks, SL8 5BU

 07958 322657  laura@clearphysio.co.uk

Solicitors

Buchanans

Your local, virtual law firm.

Contact us on our new office number:

0333 355 1977

OFFICE@BuchanansOnline.com
BuchanansOnline.com



Computer fixed quickly on line.
Many satisfied users.
Call Connor 07852 735138.





Looking to create more space in your home?
Thinking of an extension or conversion?

We are your local chartered architectural technologist practice in Bourne End and have extensive experience in all aspects of the design and planning process from initial ideasthrough to detailed drawings for construction on site.

Please contact us for your free initial consultation.

 www.gearchitectural.co.uk
gary@gearchitectural.co.uk
 07808 922 003

Get creative at Bourne End's new pottery café

The Lemon Tree card and gift shop has thrown open its doors to its latest venture, a pottery café, adding fun and colour to an already bustling Parade.

"This isn't an art class — it's about relaxing, having fun and creating something personal. There's no pressure to be 'good', and no one is judging," explains owner Martin Walters.

"We'll give you simple guidance to get started. You can keep it as easy or detailed as you like.

"Some of the best pieces come from people who thought they'd be the worst."

Locals Priyanni and her mum Uma Varsani were among the first customers when the café opened at the end of April.

"It's my birthday today. My daughter bought this as a surprise birthday present," said Uma.

"I've never done pottery before, but I love art. I love painting. This is very interesting. I can't wait to see how it comes out."

"It's a great place," said Priyanni. "I'm going to book it again for a girls' day out. The cocktails here are something special. It's been a fantastic present for my mum."

The café is licensed and sells cocktails, prosecco, teas, coffees and cakes.

The process is simple. A one and a half hour session costs £5 and includes paint, materials, professional glazing and firing in the on-site kiln.

Pottery items for painting range in price from £7 to £30. Once glazed and fired, finished pottery is ready for collection after 10 days, often sooner.



Priyanni (left) and mum Uma

Pottery items range from ornaments, including dinosaurs, to celebration plates, bowls and mugs.

"Babies' feet and hand prints and pets' paw prints, are just some of things customers can create," says Martin. "We offer team-building sessions, parties or just a chance to relax and have some fun."

See their advert below for contact details.



Captions (from left to right): The kiln takes 30 hours to fire the painted and glazed pottery. Some of the extensive range of ornaments. A great idea for Father's Day.

Report by Hugh Howard.



Selling cards, gifts, jewellery, various wines and spirits, accessories for pets, hampers and homeware. Our gift shop stocks a large amount of locally sourced products. Come here to find your Father's Day gifts.

27 The Parade, Bourne End, SL8 5SB

E: TheLemontreegifts@outlook.com Tel: 01628 525609



We are now also a Pottery Painting Café, so come and book some time with us at

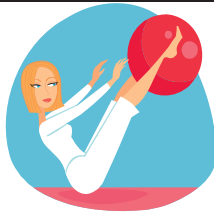
www.lemontreepotterycafe.co.uk



Please support our website for unusual and unique gifts. Not only do we offer unbeatable quality and price, but we also offer free delivery anywhere in the UK within three business days!

www.lemontreegifts.co.uk

Pilates Classes



St Dunstons
Bourne End
Beginners/Mixed
Level.
Wednesday 6.20pm
Thursday 9.30am

1 to one and 2 to 1 by
appointment

Little Marlow Pavilion
Beginners/ Mixed
Level.
Monday 6.30pm
Thursday 1.30pm

For further details call
Sally:

on **0787 625 1967**

*Pilates Institute
Qualified Instructor*

Kitchingsally@hotmail.com

Chiropody

Bourne End
Community Centre

Monday Mornings

07986

606814

*For the treatment of all
Foot Ailments*



Brittons Solicitors
2 The Parade
Bourne End
Bucks SL8 5SY

Friendly, helpful, professional,
efficient and cost effective legal
service.

We look after you.

Telephone: 01628 533350
Fax: 01628 533119
Email: lex@brittonsol.co.uk

**ADVERTISE IN TARGET
MAGAZINE**

Contact details page 2

RS Boiler Services



HEATING • PLUMBING • ELECTRICAL • RENEWABLES

Domestic & Commercial Heating Engineers
Servicing - Repair - Installation

Natural gas, LPG, Oil, Heat pumps, Warm air,
Under floor heating, Radiators, Unvented hot water,
Swimming pool boilers and more....

01628 483099

www.rsboilerservices.co.uk



**READ LOCAL CHURCH REPORTS ON PAGE 30 AND
OUR GROUP REPORTS ON PAGES 34 and 35**



The Pentagon Clinic

Osteopathy and Physiotherapy

Stella Halpin BSc.(Ost.)
David Turner B.Ost.
Morag Bowie M.C.S.P.M.H.P.C.

The Annexe
Bourne End Day Care Centre
Wakeman Road, Bourne End
Bucks SL8 5SX

email: info@pentagonclinic.co.uk

www.pentagonclinic.co.uk

Tel: 01628 533200

Our highly qualified and
established Clinical Team
continue to provide
Osteopathy, Physiotherapy
and Sports Massage
for all ages.
We have a wealth of
experience in the
assessment and treatment
of a wide range of
musculoskeletal
conditions.

bourne end dental



Our exceptional levels of expertise and our team approach to
caring means Bourne End Dental has been at the forefront of
general practice for more than 20 years.

- ❖ Considerate dentistry in a caring environment
- ❖ Superb clinicians with a family focus
- ❖ Early morning & Saturday appointments
- ❖ Specialists in gum therapy, root canal treatment & braces
- ❖ Cosmetic dentistry & whitening
- ❖ Dental implants & facial aesthetics

**Protecting, renewing and enhancing the lifelong
dental care of our patients**

01628 523 353

Station Road, Bourne End, Bucks, SL8 5QF

www.bourneendental.co.uk





CASTLE VIEW
RETIREMENT LIVING | WINDSOR



Your Own Home, Not a Care Home. Making the Right Choice for You.

Retirement
Apartments
Available to
Purchase
or Rent

Moving into an Integrated Retirement Community (IRC) isn't about giving up your independence... it's about protecting and preserving it.

Our latest guide will help you understand what support really means and why planning ahead gives you more choices, not fewer.

At Castle View you're encouraged to Live Life Your Way. With Support. When You Need It. Scan here to read more...



Search: Castle View Windsor or call **Nicky King**, Later Living Advisor, on **01753 378127**
Apartments available to Purchase from £325,000* or Rent from £2,663 monthly.

*Other charges apply



As seen in
Good Housekeeping

Follow us... on our socials for future events, plus tips on staying active! Search: **Castle View Windsor**



Castle View Retirement Living, Windsor SL4 5GG | 01753 336060 | castleviewwindsor.co.uk

Please support Target advertisers



BAKE ON GOES ON

Rosie O' Hagan's fund-raising Bake On had to be rescheduled when the star cook broke her wrist at the beginning of the year. So it was all round to Rosie's in April for those who had signed up to enjoy expert guidance on pastry and cake making.

Rosie's kitchen and conservatory weren't as spacious as the church hall venue prviously planned, but the atmosphere was warm and friendly with lots of laughs.

Everyone got involved, whether they were nine or 79 years old. And everyone went home with quiche (gluten free), banana and berries muffin (gluten free, vegan with no refined sugar), a colourful flower arrangement and a raffle prize. It was a perfect afternoon packed with information about ingredients, cooking tips and short cuts when necessary. Rosie just loves food and talking about it.

The Bake On raised £290 for St Paul's with St Mary's stone floor renovation fund and £30 was donated to the Wycombe Food Hub. Exhausted, but happy, Rosie was delighted that the event went ahead. "I am so grateful to the four wonderful volunteer assistants and to all the participants for entering into the spirit of Bake On," she grinned, "my broken wrist is healing well."



DAY IN THE SUN FOR THE GUIDE DOGS

Grace at the Walnut Tree in Bourne End held a fundraising community day at the end of March. Glorious weather, lovely stalls to browse and all in aid of Guide Dogs for the Blind.

Dogs were the attraction and they got plenty of attention. Raffle gifts were donated by local businesses and there was an auction for top prizes. The Peake's Plant Sale attracted lots of interest in one corner of the pub garden.

Grateful thanks to everyone who helped make this a good day for the dogs. The final total came to a spectacular £3,356. Thank you to everyone involved.



Grace, left, with stallholders at the event



UPPER THAMES SAILING CLUB OPEN DAY
(see report page 20)



Every once in a while — take the scenic route

UPPER THAMES SAILING CLUB

report by Tony Ketley

The future of sailing is in the hands of the young, so how do we get them involved? We can't look at this selfishly as a club, we must look at it as a sport.

The young members that we sign up today are most likely to move away when they are young adults possibly keeping up the sport at another club. We hope that other clubs have the same ethos.

Our annual Open Day is our chance to attract families to the sport, obviously it is the parents that make the decision to come along, but it can be the children with their enthusiasm that convince mum and dad to join our sailing club.

Our Open Day in April was ideal, with sunshine

and a light wind (everything always seems better when the sun shines). Light winds don't cause alarm, it's a magical experience for children, being gently wafted along the river with the water tapping on the side of the boat.

Upper Thames is very fortunate to have sailing craft (Thames A Raters) that can take a modest size family when required. All the family get the experience together and can talk about it later.

We did rather well with the visitors at open day. We had young families in abundance, some of who made the decision to join there and then, some are thinking about it.

We had some young lady visitors who had travelled out of London to come and see what we had to offer.



More photos from the sailing club's Open Day on page 19



An Open Day is an all-hands-on deck type of day, with the meet and greet team, the membership desk, the training desk, tours of the club, the galley team... you can't have too many members on hand.

Yes, it was a good day with a pleasing result, those that gave up their day to be at the club should be feeling rewarded. And to top it all 'Tea By The Thames' made £347 for the Ellen Mac Arthur Cancer Trust.

If you missed open day and are interested in membership, look us up on the web <https://www.utsc.org.uk/> We'd be delighted to receive your enquiry.



DAYTIME ACTIVITIES

Scan here for more info



BADMINTON



CHAIR YOGA



TABLE TENNIS



WALKING FOOTBALL



PICKLEBALL



YOGA



We are running an exciting range of morning activities in our Sports Hall, offering a mix of coached sessions and casual, social sporting activities.

We are also running some lunchtime activities, so why not step away from your desk for an hour and join us?

Flexible, pay-as-you-go activities
Book and pay online



www.bejsc.co.uk

The Sports Hall, New Road, Bourne End SL8 5BS



BOURNE END JUNIOR SPORTS CLUB

Founded in 1970 Bourne End Junior Sports Club is a registered charity run by volunteers to provide sport and recreation for children and young people, with many being highly qualified in their own sport. The New Road Sports Hall was built in 1982 and later extended to include a climbing wall and a club room. The multi-sport centre is used extensively by club members and members of the whole community. Please visit our website for more information www.bejsc.co.uk

BOURNE END SPORTS CLUB

Adult Sports

Bourne End Sports Club continues to grow its range of adult daytime activities, offering something for all abilities in a friendly and welcoming environment.

ADULT SOCIAL SPORTS SESSIONS

Table Tennis • Badminton • Pickleball

ADULT WALKING FOOTBALL

In partnership with Wycombe Wanderers Foundation

ADULT CHAIR YOGA

In partnership with Wycombe Wanderers Foundation

ADULT PICKLEBALL ADULT YOGA (COACHED SESSIONS)

Sessions include Walking Football, Chair Yoga, Pickleball and relaxed social sports, with a new Friday morning Yoga class launching in May.

These sessions are designed to be accessible, whether you're returning to activity or trying something new for the first time. Many participants enjoy not just the physical benefits, but the opportunity to meet others, take a break from the day and be part of a supportive local community.



NEW! at Bourne End Sports Club
Feel Good Friday Flow Yoga
Fridays 09:30-10:30am

A relaxed, welcoming yoga class for all levels.

BOURNE END JUNIOR SPORTS CLUB

Junior Sports

BEJSC offers a wide range of activities for young people, helping children build confidence, develop skills and enjoy being active.

Our long-established swimming programme continues to support children from their first lessons through to more advanced stages.

Basketball sessions provide a fun and energetic way to learn new skills and be part of a team, while junior pickleball offers a great introduction to one of the fastest-growing sports in the UK.

Across all activities, the focus is on participation, enjoyment and development in a safe and encouraging environment.

Building skills, confidence and a lifelong love of sport.



Football at BEJSC

Football remains a key part of BEJSC, with sessions available from Reception age through to teenage years. The club provides a structured pathway for young players to develop, with a strong emphasis on teamwork, confidence and enjoyment of the game. Run by dedicated volunteers and qualified coaches, the football section offers both training and match opportunities in a positive and well-organised setting.

We're also proud to share some exciting news!

Bourne End Junior Sports Club has been named the first Partner Club in the new Wycombe Wanderers Foundation Partner Club Programme. *Read more via our social pages.*



TRY OUT A NEW SPORT!

BOURNE END JUNIOR SPORTS CLUB



Visit our website – www.bejsc.co.uk Email: office@bejsc.co.uk
Follow us on Facebook - BEJSC Follow us on Instagram - @bejsc1970
Chairman: Matt Todd 01628 528110 (answerphone)
Editor: Anna Hayward marketing@bejsc.co.uk

For more information on all our activities see our website www.bejsc.co.uk



Bourne End & District u3a

by Vivienne Strayton

This month I visited the u3a poetry group. This is one of our oldest groups and has a very dedicated membership of eight people who come together once a month to present and listen to poems.

The group chooses a theme for each session, sometimes chosen together and, now more commonly, an individual member produces a challenge for the others. The members then go off and find poems to comply, however loosely, with that theme.

This time, the theme was 'Sun, Moon and Stars'. There was an astonishing range of poems from Shakespeare to Chaucer to Sylvia Plath. Other themes have included Destiny, World War Poems, Far Flung Places, Weather and London.

More lighthearted afternoons have been spent listening to limericks and poems by John Betjeman.

There is always a lot of discussion and laughter and all the members obviously get a lot of pleasure from their poetic excursions. Occasionally, a member produces a poem written by him or herself and that's always very welcome.

This was a thoroughly enjoyable way to spend the afternoon and a real eye-opener into the joys of poetry for someone who has always thought it something rather difficult to take on.

The poetry group is just one of the many Bourne End & District u3a groups, open to all local residents who are retired or semi-retired.

Have a look at our website (bourneendu3a.org.uk) for a list of interest groups, or send an email to chair@bourneendu3a.org.uk if you would like to join us.

Picture shows (left to right) back row: Anne Arton, Philip, Marion, Ann, David and front row: Andy Becker, Hilary Jackson and Sue Weston



SHINE IN YOUR SPORT

Come and visit us in our concept sports store which offers:

- wide range of sportswear, equipment and footwear
- school uniform
- club kits
- knowledgeable sports staff
- hockey and cricket hitting area
- generous loyalty scheme



OPENING HOURS: Monday - Saturday, 9am - 5:30pm www.hawkinsport.co.uk f @ t
Unit 10A Wessex Road, Bourne End, Bucks SL8 5DT **Tel: 01628 819242**

The BOUNTY

Riverside inn

All our summer events are publicised on our FB page and on the events board in the pub.



Brand new play area equipment

Summer opening times – 28th March – 30th September - Every day 11:30 - 10:30
Winters - Saturday & Sunday 11:30 - dusk

Cockmarsh * Bourne end * Bucks * SI85RG
01628524451 * [facebook.com/thebounty1](https://www.facebook.com/thebounty1) * <https://www.thebountybe.co.uk/>



It's River Time

By Andy Annable



Skipper Andy Annable brought the Captain Beaky boat to Bourne End in 2023, offering river trips on our stunning stretch of the River Thames. Andy, meanwhile, has lived here all his life and we are happy to welcome him on board as Target's new river correspondent.

Ahoy all, and welcome to my new column *It's River Time*.

Well, first of all, a great big 'thank you' to Cindy and Dominic for their four years writing *River News* and, previous to that, Peter Osbourne and his *Marina Life*.

I feel that I have a big job to fill those boots, especially Peter's as he had very big feet (that was probably an original Peter joke).

When you enter the Bourne End Marina you will see a little boat 'Peter' with flowers in it, which is a lovely tribute to him by the marina.



The river finally came off the Environment Agency 'Red Boards' in mid March (Red Board means the agency advises users of all boats not to go out on the river as the strong flows make it difficult and dangerous to navigate).

If I or any other boat owner were to operate on the river during this alert, we would not have any insurance, as the Environment Agency is a Government Agency and therefore their advice is always correct. That's how the insurers view it anyway.

This point is regularly vigorously debated every year within various river forums.

The river tends to be in this flooded state during the winter months; I spend a little bit of time maintaining the boat, but I am mainly at home studying and willing the forecast not to have rain in it.

This length of time at home seems to have created a lovely bond between me and Lady Beaky, so when the weather clears she immediately encourages me to spend as much of my time as I can on the boat and is happy for me to spend all of my time onboard. I am truly blessed to have such support as that.

Lots starting to go on at the marina. Much time is spent during the winter months just keeping the marina clear from jetsam and flotsam which includes large numbers of trees and branches.

Ropes have to be constantly adjusted due to the varying heights of the river which can be an additional 1.5 meters in height.

Boats are now being lifted by the crane to be painted, polished, serviced, surveyed or sold and transported away. So it's a very busy time for the boys there, along with Hutchins marine.

The Bounty has made improvements to the play area in the garden with more slides and climbing bits. I was offered the chance to try them out, but declined as I do not have the time to spend in A&E.

The Bounty is now open 7

craft, the very large ones — 45 feet plus — along with the local smaller ones. Please note that no previous knowledge of boating is required to hire these, although the hirers inform me that their customers are given instructions, apparently.

In fairness there are some experienced boaters among them. I have to treat them all the same and know that they will try and collide with me and anybody else, but the excitement for us is that we just don't know when and how they will try to do it.

Local wildlife has now come out of winter survival mode and is concentrating on another stage of life which results in seeing the next generation emerging. It makes me chuckle when I hear how some parents try to explain what is going on to their young ones.

At Dinnies Riverside, the little park next to the marina, I watch people coming down to feed the ducks and swans. That is terrific, but please bear in mind that bread also is eaten by other birds, predominately gulls.

At this time of year the heron gulls also tuck into the young chicks, I am writing this in mid April and have just watched an entire brood of ducklings disappear in one day. The gulls take the ducklings, sometimes mid-flight.

The red kites have a go at the gulls to make them drop their prey and the kites have them instead. This time of the year can be brutal.

If you can please feed the ducks and swans with proper swan and duck food it helps as the seagulls are less interested in this and fewer gulls around means fewer cheesy chips going missing as well.

days a week and will shortly be opening their outside bar.

El Cerdo seem to be getting busier and is now established with a great reputation for their tapas and drinks. They are open from Wednesday through to Sunday. We are blessed by having some great places for food and drink in the village.

The local school rowers are now up and down the reach from Marlow again and it is great that most are continuing to not race through the marina.

The marina moorings are very tight and to get out of your mooring into the mainstream is difficult. It's not easy to see oncoming traffic,



so when you enter the channel there is an increased risk of collision if there are fast moving craft going by. So thank you school rowers for making it a little bit safer for all.

We are now beginning to get flurries of hire

Having operated on this part of the river for the past three years I can honestly say that our stretch is probably the most panoramic and varied stretch of the River Thames.

Back in the 1930s it was *the* place to holiday, the river here is steeped in history which I hope to highlight in future articles.

With the summer months coming up we have paddleboarders, sailing boats, canoeists, motorboaters, hire boaters, swimmers and, alongside the river, Thames

Path hikers, dog walkers, joggers, cyclists and sponsored marathon runners, fisherpersons etc etc. What could possibly go wrong?

Be safe and make sure that it doesn't go wrong for you.

See you all out and about on the river and give us a wave!



Find out more about Captain Beaky at www.harbourtours.co.uk

BRIDGE PLAYER'S BIDDING QUIZ

♠A 8 5 W N E S
♥K 9 7 3 1♦ 2NT¹ 3♦
♦10 9 4 2 ?
♣Q 4 ¹Lowest two suits, 5+5+

4♥. You have only 9 points – but what great points they are. You have four-card heart support (2NT showed at least 5-5 in the rounded suits) and fitting honours in both of partner's suit. In addition, since the opponents are bidding diamonds, your ♠A is most unlikely to be facing a void.

Julian Pottage

English Bridge is published by the English Bridge Union.



AFFILIATED CLUB



A. Stride



Heating & Plumbing
Bathrooms & Wet Rooms
Building & Roofing
Rubber Flat Roofing & Tiling
Upvc Fascias, Soffits & Gutters

Estimates Given Free

Telephone: 01494 440219
Mobile: 07973 439781

ABSOLUTE CLEANING
Windows & Gutters
Domestic & Commercial
Ring Mark Holt
0791 2985500

For Hire - Two Halls & kitchen facilities

Ideal for children's parties; aerobics; dancing; ballet classes; meetings, etc.
Contact Ann 01628 526865
or Muriel 01628 523622
Ample parking @ Cores End Church

MANKIND

MENS HAIRDRESSING

Tel: 07761 696034

Appointments and walk-in service

15 The Parade,
Bourne End SL85SA



Orange Tree Garden Services

Hi, I'm Danny.
Your local gardener

Hedge cutting
Planting
Garden resets
Small to medium tree pruning
I am also a fully trained arborist/tree surgeon
Orange Tree Show Garden at Emmetts Farm Shopping Village, Little Marlow
www.orangetree.me.uk
07766 801 942

Graham Blake soft furnishing

- * Loose covers
- * Curtains
- * Re-upholstery
- * Tracks & Poles

For personal, helpful service, please call
0780 1182 400

gblakefurn@gmail.com
www.grahamblake.com

THE GARDEN STUDIO

Friends or family visiting and not enough room?

The Garden Studio is self-contained accommodation in Bourne End available for short lets.

07796 938369

gardenstudiobourneend@gmail.com



ARNOLD FUNERAL SERVICE

Traditional, Alternative & Green Funerals
Pre-Payment Plans Stonemasonry Floristry

Flackwell Heath

24 White Pit Lane
Tel: 01494 952888

High Wycombe

891 London Road, Loudwater
Tel: 01494 472572

Marlow

21-23 Little Marlow Road
Tel: 01628 898866

enquiries@arnold-funerals.co.uk
www.arnold-funerals.co.uk

24 Hour Service

BARRY'S GUTTER CLEANING SERVICES



*Also cleaning of fascias, soffits, patios and driveways

* Small repairs also undertaken

Call 07966205145

barrysteptoe@yahoo.co.uk

Colin's Garden Services

Tel: 07884 262871

Garden

Grass Cutting
Maintenance
Patios

Hedge Cutting
Fencing
Turving

Services

Shaun Guard

TV AERIAL & WIFI SERVICES

- Aerials - supplied & repaired also poor reception solved
- Satellite - Sky Q dish upgrades, discreet dish installation
- Internet - blackspots cured, internal & external data cables in your home & outbuildings
- TVs - hung on your wall or set up & tuned

 OXFORD AERIALS

Call Marlow 01628 562450
www.oxfordaerials.co.uk
shaun@oxfordaerials.co.uk

Bourne End & Cookham Probus Club

By Bill Leftwich

Ours is a club for retired businessmen and we meet for lunch every third Wednesday with an invited speaker.

In March the club decided to hold a 'Million Dollar Quiz' for members giving them individually the opportunity to win a million.

Our chairman, Trevor Jones, donned in a black academic gown as the Quizmaster, explained the format and then divided members into four eminent teams - Eton, Westminster, Winchester and Harrow. Each team was given a 40 question, multiple-choice, quiz sheet using many photographs and given a one minute thinking time on each question.

Following a great deal of hilarity and banter the Harrow team was declared the winner and each player in the team was awarded a National Lottery ticket giving them the opportunity to win a major prize. The runners up were given one ticket per table. This was hugely enjoyed by all present but, unfortunately, to date we have had no reports of outrageous celebrations in the locale.

In April our chairman invited an old friend, Mel Holley, to give a talk on 'Rail - how on earth does it all work?'

Mel, with his long experience with trains, initially took members back to 1948 when the government decided to nationalise the big four railways (The British Transport Commission), 55 other railways, 19 canal companies, 246 hauliers, London Transport, 877,000 staff and 52,000 miles of track...phew.

Not surprisingly, by 1955 this was found to be too large and was then split into five regions, with a decision to invest heavily, eliminate steam trains and eliminate the deficit.

Unfortunately the ASLEF union went on strike and scuppered most of this.

Mel then took us on a merry-go-round of facts, plans and counter-plans that have occurred over the past 40-50 years.

More than 75 years of history of industrial decline and a legacy of changing governments, policies and funding was wrapped up in an excellent talk with superb visuals to an audience that had lived through all these successes and failures and who really showed their appreciation to the speaker.

If you would like to join our excellent, friendly club please contact Roger Gould on 01628 524122

Ladies Probus Group

By Helen Heard

(including Maidenhead, Cookham, and Bourne End)

A last minute speaker change allowed us the privilege of welcoming a Young Enterprise Group, from Piper's Corner School sixth form to present their business model 'Afternoon Seed'.

They spoke knowledgeably and articulately about their project regarding sustainability and environmental adherence, even down to the non-toxic glue to protect the birds when pecking from the birdfeeders they had made from recycled vintage china. How delightful to support the businesswomen of the future.

We look forward to our summer lunch in June and the story of The Concordia in July. As always we try to deliver a varied and interesting programme.

We are a small, diverse group of like-minded

women, who enjoy the fellowship of a tasty lunch, good conversation and interesting speakers.

We meet on the first Tuesday of each month at The Pines Hotel in Burnham from midday to 3pm and on the third Tuesday at 11am for coffee which has moved back to The King's Arms on Cookham High Street following closure of The Feathers. If you would like to know more or think you would like to join us for a coffee or lunch, please contact Helen Heard (chairman) on 07789 504267.

Bourne End WI

Carolyn Judge

Our year starts in April when a new programme of meetings and talks is issued. We try to balance interesting speakers together with time to chat and get to know fellow members. The success of our sub-groups show the camaraderie and friendships which have been formed.

Our April meeting began with members enjoying Easter treats prepared by our catering team; they always come up trumps by tempting us with something inviting to eat.

Keeping to the theme of food, our thoughts turned to those less fortunate when Helen Foster, from One Can Trust, told us not only of the challenges the charity face, but the progress they have made since her last visit.

A Community Support Team has been formed and they now run toddler groups twice a week in High Wycombe, a free lunch in Micklefield once a week as well as a children's clothes bank. School uniforms are also provided twice a year for those in need.

Our members had brought along donations for the food bank and it was heartening to see the quantity and selection provided.

In May, one of our members, Ruth Walne, gave a talk on Mercy Ships. Ruth has been a volunteer nurse on Mercy Ships many times over the last few years.

This time she told us of her recent trip to Sierra Leone, where some wonderful work had been carried out, often under very difficult circumstances.

Ruth is also a member of Flackwell Heath WI and I am sure they are as proud of her as we are, as Ruth has been awarded a BEM for her work with Mercy Ships.

No doubt we will be asking her to speak to us again, to tell us all about the day she actually receives her very well deserved award.

If you feel you would like to know more about us, please email bourneendwi@yahoo.com

Little Marlow & Well End WI

By Veronica Kay

Members were in good spirits at the April meeting due the sudden change in weather. The beautiful sunshine was in its glory.

The speaker, David Bevan, a physiotherapist at The Bisham Abbey Clinic, explained that he specialised in the treatment of osteoarthritis in the lower body and reassured members that surgery can often be avoided with appropriate therapy and life-style changes, such as weight loss and regular exercise.

Members have been given a guided tour of St Peter's Catholic Church, both the Pugin Church and the modern church, by Deacon Kevin. He pointed out that the original Marlow High Street was St Peter Street, aptly named 'Duck Lane,' leading into the river, where they ducked the witches.

Pauline Clitheroe welcomed members to Little Marlow & Well End's 66th Birthday meeting in May. Appropriately, the celebration had a 60s theme.

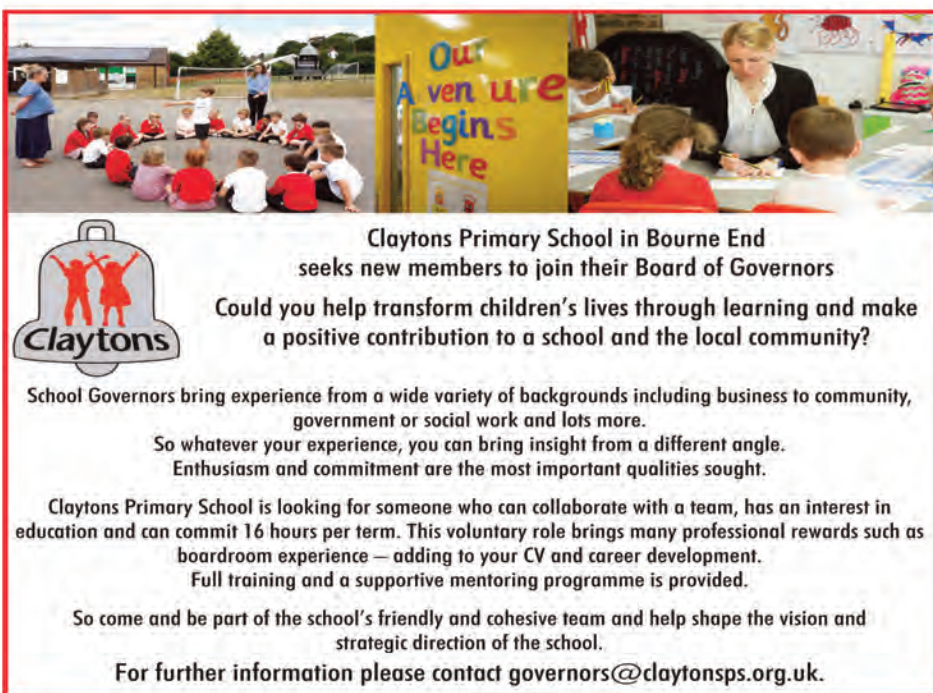
The pavilion was decorated with original posters from concerts performed by a number of 1960s icons; Gene Pitney, Billy Fury, Dave Berry, Wayne Fontana and the Stylistics.

Pauline Clitheroe completed her nostalgic journey by sharing her memories of the Diana Ross concerts she had attended. Kate Bradford organised a 1960s quiz and invited members to share their memories of that decade.

Various fashion items from the era were displayed and Mary Simmons showed her cricket bat and blazer from the English cricket team's tour of South Africa.

Kate concluded the quiz with some interesting facts about the various artists, films and shows which appeared in the answers to the quiz. She was thanked for providing such an entertaining activity and was presented with a bouquet of flowers.

The president closed the meeting with an address that the then president, Judy Wilson, gave when the Institute celebrated its 50th Birthday in 2010.



Claytons Primary School in Bourne End
seeks new members to join their Board of Governors

Could you help transform children's lives through learning and make a positive contribution to a school and the local community?

School Governors bring experience from a wide variety of backgrounds including business to community, government or social work and lots more.

So whatever your experience, you can bring insight from a different angle.
Enthusiasm and commitment are the most important qualities sought.

Claytons Primary School is looking for someone who can collaborate with a team, has an interest in education and can commit 16 hours per term. This voluntary role brings many professional rewards such as boardroom experience — adding to your CV and career development.
Full training and a supportive mentoring programme is provided.

So come and be part of the school's friendly and cohesive team and help shape the vision and strategic direction of the school.

For further information please contact governors@claytonsp.org.uk.

**We
know
the
property
market**

Call us to arrange a free market appraisal
Sales - 01494 680018 Lettings - 01494 685518

Visit our website for an
INSTANT ONLINE VALUATION
www.ashingtonpage.co.uk

Ashington Page
LOCAL SALES & LETTINGS

Simon Battle
**REGISTERED PLUMBER
GAS SAFE HEATING ENGINEER**



Over 30 years experience

Tel: 07912 383377

sbattle474@gmail.com



Quality hairdressing in the
comfort of your own home.

Experienced, fully qualified and friendly
mobile hairdresser covering Marlow and
the surrounding area.

Toni & Guy trained hairdresser with 30+ years experience
in the professional hair industry. Using the latest salon
products and techniques for cut, trim and style.

Call to book an appointment.
10% OFF your first visit.

T: 07845 901395
E: bmeighan@hotmail.co.uk

Belinda HAIR BY

G. Smith Funeral Directors

- Bespoke funeral services
- Direct Cremation • Memorials

Call the team on 01628 918 630



7 The Green, Wooburn Green HP10 0EE



L & J vehicle specialist

- Servicing
- Diagnostic
- Maintenance
- Repairs
- Tyres
- MOT (by appointment)

Car repair & maintenance on all makes
of vehicles, classic cars & light commercials

Free Collection & Delivery Service

in and around surrounding areas of High Wycombe



L & J vehicle specialist

For all your vehicles needs

Call us on **01628 669111**
to arrange an appointment

Enquiries: ljvehiclespecialist@gmail.com

www.ljvehiclespecialist.co.uk

Old Station Yard, Station Road, Taplow, Maidenhead, Berkshire SL6 0NU

R J Heath Decorating

Quality Painting & Decorating

Professional & Reliable Service

Call: 07963 177476

Email: hector75@hotmail.co.uk

C.O.D. GROUNDWORKS

Specialist in all
types of Groundwork

- Paving
- Fencing
- Drainage
- Patio Cleaning
- Patios
- Block Paving
- Driveways
- Concreting

**NO JOB TOO SMALL
FREE ESTIMATES
Tel: 01628 528637
Mob: 07778 371552**

ADVERTISE IN TARGET...SEE PAGE 2 FOR CONTACTS



The end of The Big Paddle last year

Paddlers will be August Bank Holiday river highlight

Once again the paddlers from Mankind Barbers will be taking to the river over the August Bank Holiday from 29 to 31 August.

They will start from Shillingford Bridge and work their way down the River Thames over the three days, finishing at the Bounty around lunchtime where Damian and his crew will welcome them. Once again their band W3G will be performing to celebrate their return.

So far Gillian, Chris and Chris with Jamie and Taylor are committed to the challenge and they'd welcome any new paddlers to register via their website thebigpaddle.uk where they can find more information.

It's a fabulous way to see more of the River Thames and overnight accommodation is part of the package. If you enjoy paddling and like a challenge

why not find out more and consider joining them. So far the paddlers have raised close to £10,000 for Breast Cancer Now in memory of a Mankind barber who died of breast cancer leaving a young family. The Big Paddle will feature in Mankind's window through the summer with teeshirts, hoodies and updates to promote their fundraising. Gillian hopes for the support of local businesses with donations of items for their raffle or the auction. Just call into Mankind with donations and they will be gratefully received. Every donation helps to make the event finish on a high note. Gillian Yuill would like to thank the quizzers at Bourne End Library for raising £245 towards the running of The Big Paddle. "It is much appreciated and I hope they enjoyed the cakes," she told them.



Cancer CONNECT is a warm, nonclinical community for anyone affected by cancer — patients, carers and families. We offer relaxed coffee and chat sessions where people can connect, listen, share (if they wish), and be gently signposted to local support — through and beyond a cancer. There's no pressure to talk. Just come as you are. Founded in March 2026, the group aims to ensure no one feels alone, providing a safe environment to talk, listen, and connect. The team combines professional experience with personal insight. There is Katy Adams, who began in clinical research, retrained as an acupuncturist and now supports cancer patients with both treatment and emotional care, Sarah Ralphson who also worked in

clinical research in cancer and now serves as a trustee for a cancer charity, and Carolyn Davenport, diagnosed with breast cancer in 2018, she brings a deeply personal understanding of how overwhelming a diagnosis can feel. The first meeting, held at Flowerland, welcomed nearly 20 attendees and was a great success. Together, the team is passionate about creating a supportive community where anyone affected by cancer feels heard and understood. **Next meetings: The Café, Flowerland, Bourne End, between 10.30am and 12.30pm June 19 and July 17.**

Pictured are the Cancer CONNECT team (l to r) Katy, Sarah and Carolyn



MEETING IN BOURNE END



The Fruit & Flower Market Ltd

Your local destination for fresh fruit & vegetables, beautiful flowers, indoor and outdoor plants, bedding plants, organic groceries and organic dairy.
50 THE PARADE, BOURNE END SL8 5SS
Tel: 01628 521403



Fresh produce, great choice and friendly service every day

Shop locally... support local businesses

Stacey

Home Visiting Foot Health Practitioner

A local Foot Health service available in your area



Services provided -

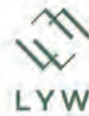
- Routine nail care
- Hard skin, Corn and Callus
- Verrucae treatment
- Ingrowing toe nails
- Fungal nail treatment
- Elderly care home visits
- Home Visits
- Bourne End based, local professional, friendly service

For further information or to book an appointment please contact Elizabeth Stacey on

07817 873592

or email - lizstacey70@gmail.com

Elizabeth Stacey MCFHP MAFHP



LEYWOOD ESTATES
AND LEXHAM PROPERTIES
ARE PLEASED TO
SUPPORT

**Bourne End
Community Association**

Property Investors & Developers
In the Thames Valley

Tel: (01494) 728210
WWW.LEYWOODESTATES.CO.UK
simon@leywoodestates.co.uk



Jess Lawson


Dip FH MCFHP MAFHP


JESS LAWSON
FOOT HEALTH

Foot Health Practitioner

Professional foot health
care at our Flackwell Heath
clinic, fully qualified and
insured.

Book your clinic appointment now at

 www.jesslawsonfoothealth.com

 07880 034482



BLUE DRAGON LAUNDRY & DRY CLEANING

DRY CLEANING &
DOMESTIC LAUNDRY



- Dry Cleaning Services
- 2hr & Same Day Options
- 10% off with a Preferential Card
- Domestic Laundry
- Shirt Laundering
- Wedding Dresses
- Ironing Services
- Home Furnishings
- Alterations & Repairs
- Textile Care Products

BLUE DRAGON DRY CLEANERS AT YOUR SERVICE

BRANCHES:
BEACONSFIELD | BOURNE END
GERRARDS CROSS | ICKENHAM
MORE AT WWW.BLUEDRAGON.UK.COM



Abbotsbrook Hall

Charming Arts and Crafts Hall for Hire

Bourne End SL8 5PQ

Check availability

www.littlemarlowparishcouncil.org.uk

Click on Facilities or Email
clerk@littlemarlowparishcouncil.org.uk



Advertise in Target... See page 2 for contacts



Memories of Bourne End

Target's editor was delighted to receive a letter from 88 year old Janet Creese who lives on the Moray coast of NE Scotland (pictured), but spent her childhood as Janet Muir in Bourne End. Here she shares some very clear memories of her early years here...

Bourne End in the 1940s when I was a child... what a different world it was then. I lived at Deesden, in New Road. We rented the spacious bungalow and there was a veranda out the back that looked over a large garden.

Deesden was so called as it had belonged to Mr Drewitt, the local headmaster. He had two children David and Delia hence the D's den.

The Drewitts had obviously been very keen gardeners. There was a lovely sunken area with steps down to it and a pond. It was one of my favourite places as a child as it was full of wildlife. I used to watch dragonflies emerging and clinging to the water lily stems and there were tadpoles and frogs.

The veranda looked across a lawn bordered by shrubs that had very tall lilac, forsythia, bamboos and philadelphus... there was always something in bloom. There was a path through this shrubbery to the vegetable garden which was huge. Although my mother was a keen gardener it was too much for her so the children got one side to 'play' on. We also had apple trees and kept chickens.

My father was working in Croydon designing papermaking machinery. He came home most weekends.

My brother John was four years older than me and had three friends, all called John too, and they played cowboys and Indians with arrows cut from the huge clump of bamboo. One of the Johns was once rushed off to casualty with a bamboo arrow in his cheek.

Occasionally I was allowed to participate, but usually as a prisoner or hostage. The boys all had comics each week and got ideas from them and they were also Cubs and went on to Scouts



Janet with her mum, Mildred, and brother John

so they were good at tying knots and making fires.

One day I remember the four Johns were going off to the woods. "Let me come, let me come, please," I begged. "No, you can't. You're too little." So, they staked me out on the side lawn with string around my wrists and stakes banged into the ground. It was a really hot day and they said the sun would burn me up to a blackened skeleton and that ants would come and eat me alive. And off they went. Luckily my mother heard my shouting and she rescued me.

Nowadays children can't go off on their own and their entertainment seems to be visits to theme parks. Paid-for visits were few and far between when I was a child. We made our own entertainment and went off in big groups with little brothers and sisters often in tow. They say it takes a whole village to raise a child and I really felt like that. If we were scrumping apples someone's head would pop up: "Clear off you lot or I'll tell your dad". Or the more ominous: "I'll tell the Bobby on you".

None of our adventures were malicious though, we were scrumping an apple because we were thirsty. Just one each. We would walk for miles.

When I was a child the large council estate in Bourne End was an enormous field. Each year there would be either a haystack or a very big straw rick in a little dent in the field halfway up.

When the farmer opened the haystack to get the straw to bed down cows, we would climb up the sides and one of the boys would open a couple of bales of straw to strew below in a big heap so we could jump down into a bed of soft straw. It never occurred to us that it was a nuisance to the farmer.

I remember Arthur Jameson building the Chalklands estate. He lived in one of the houses and his only daughter Anthea was my best friend at school. Above that was Clifford's Orchard which was the next estate to be built (private houses too). Some properties had apple trees from the orchard left in their gardens.

When I was 17 my father bought a new house in Goddington Road as did Mr Wakeman (I can't think of his first name). Mr Wakeman was a Londoner, but came down by coach on Sundays to fish in the stretch of the river from Bourne End to Little Marlow. He called his house The Pikes and had a sign on his house with the name and a picture of a pike.

Mr Wakeman was very community spirited and did lots to get the Bourne End Community Centre up and running. He is commemorated with Wakeman Road.

When I was very little all the flat water meadows by the River Thames had been filled with old cars scattered about and tree trunks driven into the ground to stop enemy aircraft landing. They were there for a long time.

There were ferries across the river in various places. A big ferry plied its way backwards and forwards across the river by Townsend's Boathouse. It was flat bottomed and quite spacious and with seats around the edges, it

was ferried across by an old man called Rob with a huge punt pole about 10 feet long. He seemed to do it very easily. There was always cargo for the Quarry Hotel.

On the other side of the river was a little green kiosk that sold ice cream in summer and just along to the right from the ice cream was a little sandy area where folk went to swim called 'The Flam' – the nearest thing to a beach.

Not only did we learn to swim there, but cattle that were in the big field behind would come to the river to drink along with some half wild horses that grazed there.

My brother and his friends used to try and catch a pony by its mane and get on its back. They also pretended to drive all the old cars abandoned there and collected car mascots and other memorabilia.

When John was about 12 and I was about eight, my mother gave my brother, and the three other Johns, money for the ferry for us all. They had other plans. We got down to the river and they all had their bathing costumes on underneath as they were going to swim across. So, they loaded me up with all their clothes and I crossed on the ferry. They planned to buy ice creams from the kiosk and, for carrying their clothes, I could have a lick of everyone's ice cream.

My brother came ashore stumbling through reeds with eyes like gobstoppers and breathing hard. "What's the matter with you?" I asked. He said he'd dived in and come face-to-face with a dead sheep and it had put him off his stroke a bit. Apart from a dead sheep, the river seemed much cleaner than it is nowadays. I was allowed a lick of everyone's ice cream.

Bourne End was full of American soldiers and they were very kind to children. They whizzed around in their jeeps and the boys used to shout at them "got any gum chum?" and they'd throw out chewing gum packets and Tootsie rolls and other sweets. My mother said we mustn't do that as it was like begging, but everything was rationed and sweets were few and far between.

I remember going with my brother and the three Johns to watch American soldiers making a temporary bridge across the River Thames, just beyond Spade Oak, in training for building another bridge abroad. I got a bit bored and wandered up to where some German prisoners were on a farm behind wire fences.

I had my favourite German. He was young and handsome and he showed me a picture of his two children. One looked like me. I always sought out my German man. He was my secret. He carved me a snake out of a piece of wood; it moved when you held it by the head. I had to tell my mother about him when he gave me the snake, so she went to meet him. Like me, she felt it was sad he was away from his children. I think the farmer was kind to them.

School was great. My first teacher, Miss Dodd, always wore a white silk blouse and had a brooch which was like an aeroplane wings with some writing on it. Now I realise it would probably have been from the First World War when pilots gave these brooches to their sweethearts they left behind. She didn't marry, but she was much loved by us all.

When my mother came to collect me one day she asked my mother if I could help clean out the book cupboard after school the next day. She said yes. The cupboard was full of really old 'primers' that must've been used in the 1900s and also lots of Cicely Mary Barker's Flower Fairy books. We did our cleaning and I was given a big bag of books to take home which seemed very special. I still have the Flower Fairy books she gave me as a little girl of four and a half.

I have very happy memories of Bourne End. I wonder if anyone there remembers me?

OUR LOCAL CHURCHES KEEP IN TOUCH

St Mark's Church, Bourne End

Over Easter we held our Easter Eggstravagans with many young families joining us on Good Friday. We created gardens, made cards and had an Easter Egg hunt.

St Mark's has launched a roof campaign as part of the recent revitalisation of the church to make urgent repairs to protect the building and its heritage.

We are launching a community wide appeal to raise £40,000 to ensure the church remains safe, dry, and welcoming for generations to come.

In the last two years, the church has seen real investment in new leaders, improvements to the church hall and new children's groups starting up. This vital work will provide us with a firm foundation and a stronger future. You can support this campaign at: www.crowdfunder.co.uk/p/stmarksroof



Cores End United Reformed Church

The last Link Up meeting in April was the club's regular spring outing to Toad Hall Garden Centre in Henley. The main reason for our visit at this particular time each year is to celebrate one of our member's birthdays. Dorothy Taylor has been coming to Link Up regularly for more than 26 years and this year she was celebrating her 104th birthday.

Beryl Britt (pictured left here with Dorothy) had organised a special balloon, sash and sparkly table decoration and the staff made us all so welcome, making a great fuss of Dorothy and as we left Dorothy thanked everyone and called out 'see you next year'. It was a memorable afternoon.

Beryl Britt (pictured left here with Dorothy) had organised a special balloon, sash and sparkly table decoration and the staff made us all so welcome, making a great fuss of Dorothy and as we left Dorothy thanked everyone and called out 'see you next year'. It was a memorable afternoon.



On Saturday June 20 we will be hosting a strawberry tea at 2pm. Everyone is welcome but it would be especially nice to see any folk who have loved ones buried in the churchyard. Both the churchyard and the Link Up garden are registered as part of the Quiet Garden movement.

These lovely spaces, and the meadow beyond the churchyard, are perfect for anyone to come and sit and reflect but the meadow also welcomes anyone who enjoys a bit of communal gardening to come and help general tidying, planting, watering or cutting back.

The meadow was gifted to the church many years ago by a church member, but is no longer required for burials and so when the company, who are currently applying to develop Hollands Farm, approached us proposing to purchase the land we rejected their offer and decided to turn the area into a wild meadow and orchard.

Over time we have planted hedging around the outer border and numerous fruit trees (last year we had a good crop of apples, cherries and blackberries) and also some native trees.

We meet most Saturday mornings at 10am for



about an hour or so and on the first Saturday of the month we have a regular work in. Do come and join us if you think this is something you would enjoy.

Our regular service is at 10.30am with communion on the first Sunday of the month.

St John the Baptist, Little Marlow

As summer begins we look forward to gathering together for music, celebration and moments of peace and reflection - all are very welcome.

Saturday June 6 we have Music in the Manor from 5pm to 8pm.

Spend a fun afternoon in the beautiful grounds of Little Marlow Manor. We will be entertained by All Saints' Junior Choir, the Marlow Ukulele Group and Katy Kartwheel returns with her spectacular trapeze and circus workshops - perfect for all ages.

Bring a picnic and your friends. Tickets £12.50 adults £2.50 children. For tickets and information contact Daphne Dru 07717441437 or email Daphne.Dru@4U-team.org proceeds to Wye Valley Volunteers and church funds.

Saturday June 20 and Sunday June 21 we have our Church Patronal Festival. The theme this year is The Healing Garden with artwork by Anna Payne, alongside flower displays, a reflective space, and prayers for healing offered on the hour. Open Saturday 11am to 5pm with art, flowers and activities for all. Sunday 11am Festival Service. Then the church opens again at 2pm to 5pm with flowers, activities, teas and cakes. Followed at 6pm by our Patronal Festival Evensong. A reflective and uplifting close to the festival weekend.

Saturday July 4 from 10.30am to 12.20pm we have a cafe in the churchyard. Coffee, cake and conversation. Drop in, bring a friend, bring your dog and enjoy a relaxing morning.

Sunday July 19 from 11am onwards it's our Teddy Bears' Picnic. Bring your teddy bear and join us for a relaxed and joyful all-age gathering especially for children baptised in recent years. We will share a simple service together, followed by a picnic, a lovely way to reconnect and celebrate.

Sunday July 19 at 6pm Hymns and Pimms Evensong. A much-loved summer tradition - do get in touch if you would like your favourite hymn to be sung (and tell us why) and we will try to include it.

The service will be followed by a glass of Pimms and nibbles and good company. More details: <https://bit.ly/HymnsPimms26>

For more information on our regular services and forthcoming events go to <https://bit.ly/LM-cal>
Contacts: Rev Fiona Ellingham 01628 482663
Fiona.ellingham@4u-team.org
Peter Rodger 07985 619780 (churchwarden)

St Paul's with St Mary's Church, Wooburn

We are all taking a deep breath and enjoying the spring.

Please consult our website (stpaulswooburn.org) and our Facebook page (St. Paul's with St. Mary's Church) for information about services and events, including Men's Night at the Falcon, Community Breakfast, Coffee and Conversation mornings, Lunchtime Communion services on Fridays at St Mary's, which include a jacket potato lunch, and Forest Church. Please join us for any and all activities. We enjoy creating opportunities for community to happen.

We have made the decision to move our Sunday services one half hour later. This affects both the main service (including Messy Church), which will now start at 10am and the BCC service, which will now start at 8:30am. We will be doing this on a trial basis for six months, then we will assess and make



a decision whether to continue with the later start.

Our Messy Church which takes place on each second Sunday. The next one is June 14 in the hall next door to St Paul's. Kids and adults alike will find some fun arts and crafts to do around a theme, as well as an interactive Bible story, or just read a newspaper and enjoy the breakfast baps/pastries, coffee or tea, and conversation.

Forest Church will take place on Saturday June 20 in the late afternoon or early evening. Please check 'Wooburn Forest Church' on Facebook for specifics.

The Teddy Bear Parachute event is back on this year. Come join us with your favourite cuddly toy for an afternoon of fun. The Teddys get to climb the bell tower and 'parachute' down to the garden behind the hall.

Our wonderful Holy Bakers put on an amazing spread that you can take home with you at the Bourne End Community Market each month and this year also at the Wooburn Fete on June 20. And as usual, we will open the church for a cool (or dry) place to sit, or to sit in the shade, for our weekly Church Open Afternoon Teas, starting 19 July through to September 6.

St Dunstan's Church, Bourne End

We celebrated the Feast of Saint Dunstan's in May with a light finger lunch after the 10am Mass which was a lively and vibrant affair attended by many parishioners and their families.

The day coincided with our children celebrating their First Holy Communion as well, so it was a double celebration with lots of cake and festivities.

The timing for the celebrations was perfect as building works to restore the hall had just been completed.

In June we celebrate the confirmation of our young adults which is a joyous occasion after their six months of preparation. For information or to see what is happening at St Dunstan's, see the weekly newsletter at the parish or the website: saintdunstans.co.uk



St Nicholas' Church, Hedsor

Hedsor Fair time once again. On Saturday June 27 and by kind permission of Mr and Mrs Callingham, their garden will be hosting Hedsor Fair at Orchard Dene, Riversdale, Bourne End. The fair starts at midday and finishes at 4.30pm.

There will be all the usual attractions of boat rides, barbecue, strawberry teas, great raffle prizes and lots of stalls and games to attract young and old, and this year we will have the added attraction of a Dixieland Jazz Band.

Our weekly Sunday service at 9am is always followed by coffee in the church and we welcome visitors to join us.

For details and information and help on weddings, baptisms and funerals, contact our churchwarden, Maura Carr, 01628 530181. mauracarr300@gmail.com For details of our activities visit stnicholaschurch.online and achurchnearyou.com See also our Facebook page.



Bourne End Quaker Meeting

A Quaker Meeting for Worship takes place in the Target Room at the community centre at 10am on the first Monday of every month. Everyone is welcome; we stay seated in shared silence until about 10.40am. Anyone present may share their thoughts during this period of worship, as in any Quaker meeting. We chat briefly over tea and coffee after the meeting. For more information please visit www.caqm.org.uk

Little Marlow Parish Council

By Cllr Kath Acres

On May 8 Little Marlow Parish Council held its Annual Parish Meeting at Abbotsbrook Hall. We reported on our activities over the previous year and it made me reflect on how many small (and not so small) activities our 'lowest tier of government' gets involved with and how they all add up to make a big impact on our community.

The longstanding contribution that our meeting spaces (at Abbotsbrook Hall and at Little Marlow Pavilion) make as a hub of the local community over decades is often underestimated.

Bourne End Bridge Club started playing in 1977 and Abbotsbrook Bridge Club has been going since the early 1990s.

Abbotsbrook Pre-school started in 1994 (with a play group before that) and Little Marlow Pre-school began in 1980.

If you remember jumble sales the last recorded one I could find was in 1986 (held by a local WI) and in 1991 an Opalin Sky Blue hen was voted best in the Bucks and Berks Budgie Association Annual Show held at Abbotsbrook Hall.

Mercifully 'Work That Body' in 1987 has now been superceded by Pilates, Yoga and Martial Arts.

The Coldmoorholme Lane Residents Association has held annual meetings at Abbotsbrook since it started 56 years ago. And of course our meeting spaces have hosted many and varied family gatherings to celebrate family milestones across the years.

At our Annual Parish Meeting this year we thanked and said goodbye to Mrs Christine

Samuels who retired as Abbotsbrook Hall Bookings co-ordinator after more than 40 years' service.

The fact that we have achieved so many repeat bookings at Abbotsbrook Hall over so many years is down to Christine's (helped by her husband Peter) attention to detail and friendly help to hirers (see photo).

Nobody has any recollection of anything ever going wrong and we wish Christine a happy retirement.

The 46th recipient of the Geoffrey Moss Memorial Rose Bowl this month (for services to our community) was Little Marlow resident Richard Sherwin in recognition of the huge contribution he made to Save Marlow's Greenbelt campaign against granting planning permission for Marlow Film Studios.

Now that planning permission has been granted we are liaising with the Film Studio company to ensure that residents are kept fully informed of construction activities (that currently consist of site investigations).

We are responsible for six dog bins around the parish (although the one on Spade Oak Wharf is maintained by Bucks Council).

Most of the time (as long as the sun is not out) these work well, but we continue to have to pay to clear fly tipping produced by people leaving poo bags and other litter by some bins.

Recently I was astonished to receive an email of complaint blaming 'the council' for not getting the mess cleared on a bank holiday – no reference at all was made to the people who created the mess in the first place.

Work on digitising the plan of Fern Lane

Cemetery, so that searchable historical records are accessible for all, continues and we are now at the checking stage. So the end is in sight.

The updated hall bookings calendar on our website (under facilities) means that you can see when we have availability at both Abbotsbrook Hall and at the Pavilion for 2026.

We are planning to undertake long-needed maintenance works to Abbotsbrook Hall as soon as we can.

They are both lovely halls suitable for a variety of uses and we are always happy to show prospective hirers around.

All council meetings are open to the public and it would be lovely to see you there and to hear your views. Details of times and dates of all meetings are on our website.

Cllr Kath Acres, chairman

www.littlemarlow-pc.gov.uk

clerk@littlemarlow-pc.gov.uk

Little Marlow Parish Council, The Pavilion,
Church Road, Little Marlow, SL7 3RS

Tel: 01628 890301 Mob: 07377 424998



Bourne End Community Market

Food **plants**
JEWELLERY **ART** **TOYS**
crafts **collectables**
Café & Bar **clothing**

Sat 13 June & Sat 11 July, 10-2

FREE ENTRY Wakeman Road Bourne End SL8 5SX

Call Target advertising on 01628 525415

Past Times

Edited by Barrie Penfold

Call it kismet or coincidence, but this archive story from 30 years ago suddenly had a 2026 connection. Then looking through old copies of *Target* that issue from 1996 was top of the pile. Take a look at the pictures from that issue, read the story and get up to date.

Back in 1996 *Target* was invited to be part of a BBC programme called 'Bridging the Gap'. *Target* editor, Doug Ginger, was sent up to *The Sun* newspaper to work on their showbiz desk and write up a story about a pop awards ceremony. On his own admission he had no idea about pop music, but he was reassured by a lovely young journalist that all would be fine.

Back in Bourne End we were to receive help from a Sun journalist, and a full BBC recording team, to cover some stories within the community.

The journalist was called Dominic Mohan and he landed on my doorstep and the team took over my home for the day. Dominic was great fun and had lots of stories to tell about the world of showbiz and celebrities. He went to a meeting of the Chiltern & Castle Townswomens Guild and it was filmed for the

programme. He then went on to interview the only girl on a Wycombe Wanderers football course and ended up at Glory Mill to talk about the proposals to demolish the mill, including the familiar chimney.

He wrote up the football story – which was very Sun style and different from *Target* style – left me to do the other stories and departed. (see pictures below left).

In the meantime, Dominic continued his journalistic career and was appointed deputy editor of *The Sun* in 2007 and was named as Rebecka Brook's replacement as Editor in 2009.

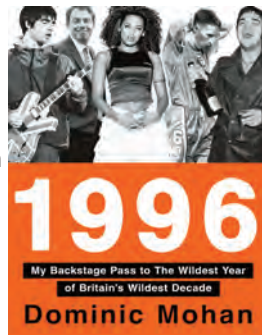
He launched *The Sun on Sunday* in February 2012, becoming the paper's first seven-day editor.

Dominic conceived the idea of re-recording Band Aid's 'Do they know it's Christmas' for which *The Sun* received a major award.

He has also worked as a broadcaster and for his interview with The Who's Roger Daltrey he received another award. In June 2013, Dominic Mohan left *The Sun* to work as a consultant and he is now the founder and CEO of his own media consultancy Dominic Mohan Media, specialising in communications, public relations, crisis management and content creation.

Then in 2026, and here comes the coincidence, Harper Collins announced the publication of Dominic Mohan's memoir titled

1996: My Backstage Pass To The Wildest Year Of Britain's Wildest Decade. And The City Of London unveiled an exhibition at The Barbican's Music Library curated by Dominic Mohan, namely 1996: A Celebration Of The Wildest Year Of



Britain's Wildest Decade - 30 Years On featuring original outfits worn by the Spice Girls, Euro 96, unseen Oasis and Britpop memorabilia, as well as personal items from the archives of DJs and producers.

In his own words it takes us back to 1996 when 'London felt like the centre of the world. It puts the spotlight on music, dance culture, art, fashion, sport, and politics in an era-defining year. Oasis rocked Maine Road and Knebworth, The Spice Girls were born and scored three number ones, including a global hit with their debut single, *Wannabe*. The Sex Pistols got back together and Jarvis Cocker's infamous stage crash at the BRIT Awards got him arrested, while his group, Pulp, was riding high in the charts with Blur and Suede.

'Trainspotting became the cult phenomenon of the decade, turning Irvine Welsh's novel into a breakout film, and Young British Artists, Tracey Emin and Damien Hirst, had emerged as two of the most provocative voices in British art. In football, as Three Lions echoed from the terraces and across the country, England was inches away from triumphing in Euro '96 at Wembley.'

Dominic Mohan was there: "With a backstage pass in my pocket to some of the biggest events, 1996 was the wildest year of Britain's wildest decade and I had a front row seat, chronicling it all and Britain became the coolest place on the planet.

"I've hoped to capture that magical period when pop, rock, football, art, dance culture, food, the media, and politics fused together spectacularly. If you were there, this exhibition will feel like you're coming home... and if you weren't there, you'll definitely wish that you had been!"



Target has a copy of Dominic's book to give away to the reader who submits to the "best memory of 1996."

Send your entries to editor@targetmagazine.org.uk by the end of June, with your name and address.

The winner, and possibly other selected entries, will appear in the August/September issue of *Target*.

Meet at Hedsor Fair

A note for your diary; Hedsor Fair falls this year on Saturday, June 27.

By kind invitation of Mr and Mrs

Callingham, the main fundraising event for St Nicholas Church (the one that looks down, over the River Thames, from its Hedsor hilltop) will be held in their delightful riverside garden at Orchard Dean, Riversdale.

With boat rides, barbecue, freshly picked strawberries with cream teas and exclusive home-made cakes, it's no wonder this is a very popular local event.

The plant stall will allow every gardener to find planting bargains and the book stall always provides a great opportunity to get that holiday reading sorted.

The Eastside Rhythm Kings will be entertaining with Dixieland jazz; ideal for a summer's afternoon relaxation by the river.

'Meet at Hedsor Fair', Saturday June 27, midday to 4.30pm at Orchard Dean, Riversdale, Bourne End, SL8 5EB.



No garden fete tea tent could exist without the hard working team of washer-uppers. Here Pat Parrousi, Valerie Field and Pam Cavendish keep good order.

KEEP IN TOUCH WITH...



TARGET SUMMER STAMP OFFER

Following on from our hugely popular Target stamp offers last year, we have a limited number of stamps, both pictorial and other, valid for overseas letters, on offer to readers at a special discount!

**Five stamps for just £10 (that's £2 each!)
Cost at the post office £3.60 each**

These stamps can also be used for 1st class LARGE letter posting in the UK (costing £3.30 at the Post Office) or put towards other tariffs for parcels, etc.

HOW TO GET YOUR STAMPS

Buy your stamps at the community centre while stocks last (minimum purchase five stamps for £10). Pay by cash, card or a cheque to BEBCA (write Target stamps on the back of your cheque)

Please call into the centre and pay £1 for your copy of Target

OUR GROUP MEMBERS KEEP IN TOUCH

Marlow & District Railway Society

In March we were transported to Wales when Christopher Jones took us on a journey from Shrewsbury to Llandovery on an almost forgotten railway line in the heart of dragon country. There were plenty of great Welsh station names for us to ponder, including Cyngordy and Llangammarch. It is clearly one of the great rail journeys that you can still travel. Christopher will be back next year to take us through to Swansea in part two.

Then, in April, Peter Robins took us much further afield, to the magical island of Cuba. Before the current US economic blockade really took hold, Cuba had a thriving sugar industry supported by an extensive rail network.

You will have heard of the old American cars that are over there; well, the goods trains bringing sugar cane in from the fields to the mills were hauled by equally ancient American steam locomotives - and Peter took some wonderful photos of them, many lit up by the warm Cuban sunshine.

Looking forward, we will be continuing our travels on June 18 when David Pinniger takes us to Ireland, and we learn about the little narrow gauge lines that once covered the Emerald Isle.

Then on July 16 Geoff Plumb returns to entertain us with 'That Was The Year That Was', this time focussing on 1972 with shots taken at home and abroad.

All meetings are at the community centre starting at 7.30pm, and everyone is welcome, with non-members paying just £3 on the door. Meanwhile there is plenty to see on our website so please take a look, www.mdrs.org.uk We look forward to seeing you.

RNLI South Bucks & Thames

The RNLI held its annual Branch Helpers meeting in April. The evening was attended by around 25 local supporters and volunteers of the branch.

The meeting was also attended by a team from the RNLI headquarters in Poole.

The branch announced on the night that Michael Prager, Branch Chairman for the last 13 years, is standing down. He has been replaced by Teresa St Catherine as the new chair (TeresaStCatherine@yahoo.com)

Linda Prager, branch media officer has been replaced by Anna James. Mary Oswald, who has done an amazing job having trained in excess of 2,000 children in water safety, had also stood down and the branch is in the process of replacing her role.



L to r: Mary Oswald, water safety trainer, Michael Prager, chairman and Linda Prager, media officer

THE HEATH SINGERS' Summer Concert



19 & 20 JUNE 2026

7.30pm on 19 June & 4.00pm on 20 June

at Christ Church, Chapel Rd,

Flackwell Heath HP10 9AA

TICKETS: £12 FOR ADULTS, £6 FOR CHILDREN
AVAILABLE FROM CHRIST CHURCH OFFICE OR AT
WWW.HEATHSINGERS.COM



Bourne End Flower Arrangement Society

Our May demonstration was all about baskets and Susan Tausig provided members with an entertaining evening with lots of laughs.

It featured baskets, but some of the

designs were interesting and Susan produced some wonderful flower displays all linked together by her amusing commentary.

As always at our demonstrations lucky raffle winners take home the displays created during the evening. Tea/coffee is provided and there's usually a sales

table of flower arranging items.

Looking ahead on Tuesday June 2 we welcome local lady Erica Cunningham with her display called 'June is bursting out all over' at 8pm in the community centre. Should be a lot of fun.

Then on Tuesday July 7 Diane Norman will present 'Ikebana from an English garden'. Diane is an award-winning Ikebana specialist with a wealth of knowledge.

Why not enjoy a wonderful evening, packed with flowers, for the visitor fee of £10.

There is no meeting in August.

For more information on the flower club contact Jenny Hardwick on 01628 526554 or email jenniferhardwick@gmail.com

Bourne End (Bucks) Twinning Association

We foster friendships between Bourne End area and Octeville-sur-mer, Normandy. New members are always welcome, French not needed.

On April 25, members met in the Target Room to enjoy several different kinds of biscuits, savoury or sweet, made from French recipes by members.

We also shared discoveries about famous French chefs, from Parmentier in the late 1700s, through the redoubtable Mères Lyonnaises; Bocuse, Michel Roux and Robuchon; right up to Laetitia Visse, who now runs a successful restaurant in Marseilles which champions a kinder culture in kitchens.

Don't go there at the weekend though: it is closed so the staff can spend time with their families.

Friends from Octeville come to stay in our homes in June, so more about that next time. We hope to have a stall at the community market in July.

Contact: Wendy Langford (chairman) langfordw22@gmail.com 07428 004417. Membership £10pp, £20 family.

ANNA PAYD Exhibition



Healing Garden
Paintings, Artist I



Church Flowers on the theme of HEALING

Open
Saturday 20 June, 11am to 5pm
Sunday 21 June, 2pm to 5pm

St. John the Baptist Church
Church Road
Little Marlow
SL7 3RU

Details at 4u-team.org

Anna's Healing exhibition

As part of St John the Baptist Church's 'Church Flowers' event based on the theme of Healing, Anna Payne will be exhibiting paintings and artists' books

inspired by her own experience of her own healing garden in Bourne End.

As one of the original members of the Visual Images Group, which runs Bucks Art Weeks, she is pleased to be able to exhibit some work on its last weekend this year.

The exhibition will be open in the church in Little Marlow on Saturday June 20 from 11am to 5pm and on Sunday 21 from 2pm to 5pm. Further details are available on the church website at 4u-team.org

Family History Society

We meet in the Eghams Room on the second Tuesday each month at 7.30pm.

Our meeting on 9 June is one where we bring along a subject from our research to talk about for approximately five minutes each.

The subject this time is 'My Family's Connection to an Historical Event'.

These are usually a mixture of interesting stories so even if you don't have a story to tell it is still worth coming along. Details of our July meeting will be on our website bucksfhs.org.uk

One Place Study Group

We continue to meet at 8pm on the third Thursday each month at the community centre.

In April we had an interesting talk and video show from David Wherrell. It was fascinating looking at a 1960s carnival on Jackson's sports ground and a Miss Bourne End contest at Deyncourt School.

Our May meeting was a bit of retail therapy as Karen Savage visited many of the old shops in the village. For details of our future meetings please go to society.bourneendbucksops.org.uk

CALENDAR OF VILLAGE EVENTS

JUNE

- 1 Mon Short Mat Bowls in the community centre 7.15pm – and every Monday and Tuesday (except first Tuesday of each month)
- 2 Tues Bourne End Flower Arrangement Society welcomes Erica Cunningham with her display 'June is bursting out all over' at 8pm in the community centre. See page 34
- 3 Wed Bourne End Community Association AGM at 7.30pm in the Eghams Room at the community centre. See page 6
- 4 Thurs (and every Thursday) Fitsteps at the community centre 11.15am to midday
- 4 Thurs Centre Bar Quiz at the community centre. Doors open at 7.30pm; please arrive by 7.45pm for an 8pm start. For more information call Diane on 07521 656413
- 4 Thurs Every Thursday at the Black Lion in Well End, join regulars for a pub quiz. Fun starts at 8pm. Call 01628 531612 to book a table
- 5 Fri Bingo in the community centre. Every Friday. The fun starts at 1.30pm and 8pm
- 6 Sat Wooburn Green Primary School Summer Fair midday to 4pm. See poster page 33
- 6 Sat Repair Café (and then every first Saturday) at Flackwell Heath Community Centre 10am to midday. See poster page 6
- 6 Sat *Cocktails for 2*, music from the 20s, 30s and 40s at 8pm. See poster page 4
- 7 Sun Tea Dance at the community centre 2pm to 4.15pm. See poster page 5
- 9 Tues Short Mat Bowls in the community centre 7.15pm – and every Monday and Tuesday (except first Tuesday of each month)
- 11 Wed Official opening of stained glass window at the Childrens' section with afternoon tea. An event by the Friends of Bourne End Library. See page 14
- 11 Thurs Open Mic Night in the bar at Bourne End Community Centre 8pm to 10.30pm. See poster page 4
- 11 Thurs The Hedsor Jazz Club, start time 8pm (until 10.30pm), admission £12 (cash only), The Hedsor Club, Hedsor Road, Bourne End (held on the second and fourth Thursday each month)
- 13 Sat Bourne End Community Market 10am to 2pm in and around the community centre. See ad page 31
- 14 Sun St Paul's Church Teddy Bear Parachute event from midday to 4pm. See church reports page 30
- 14 Sun A social with a great mix of salsa, cha cha cha, Cuban and other Latin rhythms at the community centre, £12. Call 07595 397184 or 07956 122505 info@dance2salsa.co.uk www.dance2salsa.co.uk
- 18 Thurs Line Dancing Night at the community centre from 7.30pm. See poster page 5
- 19 Fri Cancer Connect meet-up at Flowerland café. See page 27
- 19 Fri and 20 Sat Heath Singers at Christ Church, Chapel Road, Flackwell Heath. See poster page 34
- 20 Sat Repair Café (and then every third Saturday) at Bourne End Community Centre 11am to 1pm. See poster page 6
- 20 Sat Wooburn Summer Fete on The Green from midday to 5pm. See page 7
- 20 Sat and 21 Sun Church Flower event at St John the Baptist Church, Little Marlow. See page 35 and their church report page 30
- 27 Sat Coffee morning at the community centre from 11am to 1pm. See poster page 4
- 27 Sat Hedsor Fair midday to 4.30pm at Orchard Dene, Riversdale. See page 33
- 28 Sun Afternoon movie at the New Royalty Cinema in the community centre at 4pm *The Ballad of Wallis Island*. See page 3

JULY

- 2 Thurs (and every Thursday) Fitsteps at the community centre 11.15am to midday
- 2 Thurs Community Centre Bar Quiz. Doors open at 7.30pm; please arrive by 7.45pm for an 8pm start. For more info call Diane on 07521 656413
- 2 Thurs Every Thursday at the Black Lion in Well End, join regulars for a pub quiz. Fun starts at 8pm. Call 01628 531612 to book a table
- 3 Fri Bingo in the community centre. Every Friday. The fun starts at 1.30pm and 8pm
- 4 Sat Repair Café (and then every first Saturday) at Flackwell Heath Community Centre 10am to midday. See poster page 6
- 6 Mon Short Mat Bowls in the community centre 7.15pm – And every Monday and Tuesday (except first Tuesday of each month)
- 7 Tues Bourne End Flower Arrangement Society welcomes Diane Norman with her demonstration 'Ikebana from and English garden'. See page 34
- 9 Thurs Open Mic Night in the bar at the community centre 8pm to 10.30pm. See poster page 4
- 9 Thurs Hedsor Jazz Club, start time 8pm (until 10.30pm), admission £12 (cash only please), The Hedsor Club, Hedsor Road, Bourne End (held on the second and fourth Thursday each month)
- 10 Fri Author interview presented by the Friends of Bourne End Library. Tim Sullivan. See report page 14
- 11 Sat Bourne End Community Market 10am to 2pm in and around the community centre. See ad page 31
- 12 Sun A social with a great mix of salsa, cha cha cha, Cuban and other Latin rhythms. See details June 14
- 12 Sun Community Day at the community centre from midday to 3pm. Lots of fun and activities. See page 5
- 13 Mon Wooburn Residents' Association meeting, open to the public, 8pm. See their report page 8
- 14 Tues Short Mat Bowls in the community centre 7.15pm – And every Monday and Tuesday (except first Tuesday of each month)
- 17 Fri Cancer Connect meet-up at Flowerland café. See page 27
- 18 Sat Repair Café (and then every third Saturday) at the Bourne End Community Centre 11am to 1pm. See poster page 6
- 19 Sun Afternoon movie at the New Royalty Cinema in the community centre at 4pm. *What's love got to do with it?* See page 3
- 27 Mon to Fri 31 Summer Sing Camp at St Paul's Primary School. See advert page 8

The next issue of Target will cover August & September 2026.
Email editor@targetmagazine.org.uk by Monday July 6
to get your event included in the issue and/or in the calendar.

Please call into the centre and pay for your copy of Target

THE FALCON QUIZ

Set and sponsored by The Falcon Pub, Wooburn Moor

Quizmaster Steve set this quiz and landlady, Katie Lamb, generously offers a meal for two at the pub (or a takeaway) as a prize for the winner. For your chance to win, send in your answers to the questions below by email to editor@targetmagazine.org.uk (with the subject line Falcon Quiz) or write down your answers and drop them in at the community centre. Don't forget to include your contact details. The winner will be picked at random from all the correct entries on the closing date Monday July 6. Have a go... if nobody gets all the answers the winner will be the person with the most correct answers. This quiz tests your TV knowledge.

- 1) Who plays Thomas Shelby in 'Peaky blinders'?
- 2) What is the name of the unit in 'Line of duty'?
- 3) What is the name of the pub in 'The Simpsons'?
- 4) What was the name of David Jason's character in 'A touch of Frost'?
- 5) What was the name of the villain in 'Thunderbirds'?
- 6) Who played Hyacinth Bucket in 'Keeping up appearances'?
- 7) What year did 'Big brother UK' first air?
- 8) Who replaced Bruce Forsyth on 'Strictly come dancing'?
- 9) Who played Detective Morse in the original 'Inspector Morse'?
- 10) Who played the title role in 'Luther'?
- 11) Who won the first series of 'RuPauls drag race U'?
- 12) What is the name of Rene's wife in 'Allo allo'?
- 13) In which county is 'The Bay' set?
- 14) Which show features the line 'Live long and prosper'?
- 15) What is the ships computer in 'Red Dwarf' called?
- 16) Which county is 'The vicar of Dibley' based?
- 17) Which TV show had a character called 'Green grass'?
- 18) In 'Benidorm', what is the name of the hotel?
- 19) What is the name of Scooby Doo's nephew?
- 20) Which talent show did Hear'say win in 2001?

Terms and conditions: Entrants must be aged 18 or over, only one entry per person, no cash alternative to the prize, our decision is final, no correspondence can be entered into. The meal must be booked in advance and is subject to availability. Drinks not included.

Answers to the April/May 2026 Quiz:

1) Respect, Aretha Franklyn 2) I want it that way, Backstreet boys 3) Mr Brightside, The Killers 4) Happy, Pharrell Williams 5) Time after time, Cyndi Lauper 6) Ace of spades, Motorhead 7) Call me maybe, Carly Rae Jepsen 8) We didn't start the fire, Billy Joel 9) Red Sky, Status Quo 10) Jealous guy, John Lennon 11) Mistletoe and wine, Cliff Richard 12) Rolling in the deep, Adele 13) You can't hurry love, Diana Ross 14) Your song, Elton John 15) Love is all around, Wet Wet Wet 16) Gypsies, tramps and thieves, Cher 17) Drive, Cars 18) Get back, Beatles 19) It's over, Roy Orbison 20) I should be so lucky, Kylie Minogue. The winner is: S Taylor, Flackwell Heath.



The Falcon Pub

Watery Lane,
Wooburn Moor, HP10 ONE
Tel: 01628 522752



Don't miss our Beer Festival June 19 to 21, with live music on the Friday and Saturday.

Follow our Facebook page for more info



The Community Centre Bar

Your Bourne End bar

Cheaper drinks

Sports on a big screen

Regular darts evenings and musical events

Comfortable surroundings in which to socialise

Open for members of the Bourne End Community Association and their guests (membership starts from just £5 a year)

Mondays to Thursdays 7pm to 11pm, Fridays 5pm to 11pm

Saturdays Middy to 11pm and Sundays Middy to 9pm